

TYPICAL UPGRADE  
PRIMARY TO MIDDLE SCHOOL

ARCHITECTURAL

ISSUED FOR BIDDING

AUG-2023



KPESED  
Kementerian Pendidikan dan Kebudayaan  
Kementerian Agama



KPHPIP  
SCHOOLS PROJECT  
SCHOOL NAME  
TYPICAL UPGRADE  
PRIMARY TO MIDDLE  
SCHOOL

NOTE

NO.	DESCRIPTION	DATE	APPR.

REVISIONS  
NEC-SUNJIN JV



NATIONAL ENGINEERING CORPORATION

**SUNJIN**  
ENGINEERING & ARCHITECTURE

DRAWING TITLE  
ISSUED FOR BIDDING

NAME OF DRAWING

GROUND FLOOR PLAN

DATE  
Aug. 2023

DESIGNED BY  
Imran Mahmood

CHECKED BY  
Anjum Saeed

SCALE  
NONE

DRAWN BY  
Khaleid

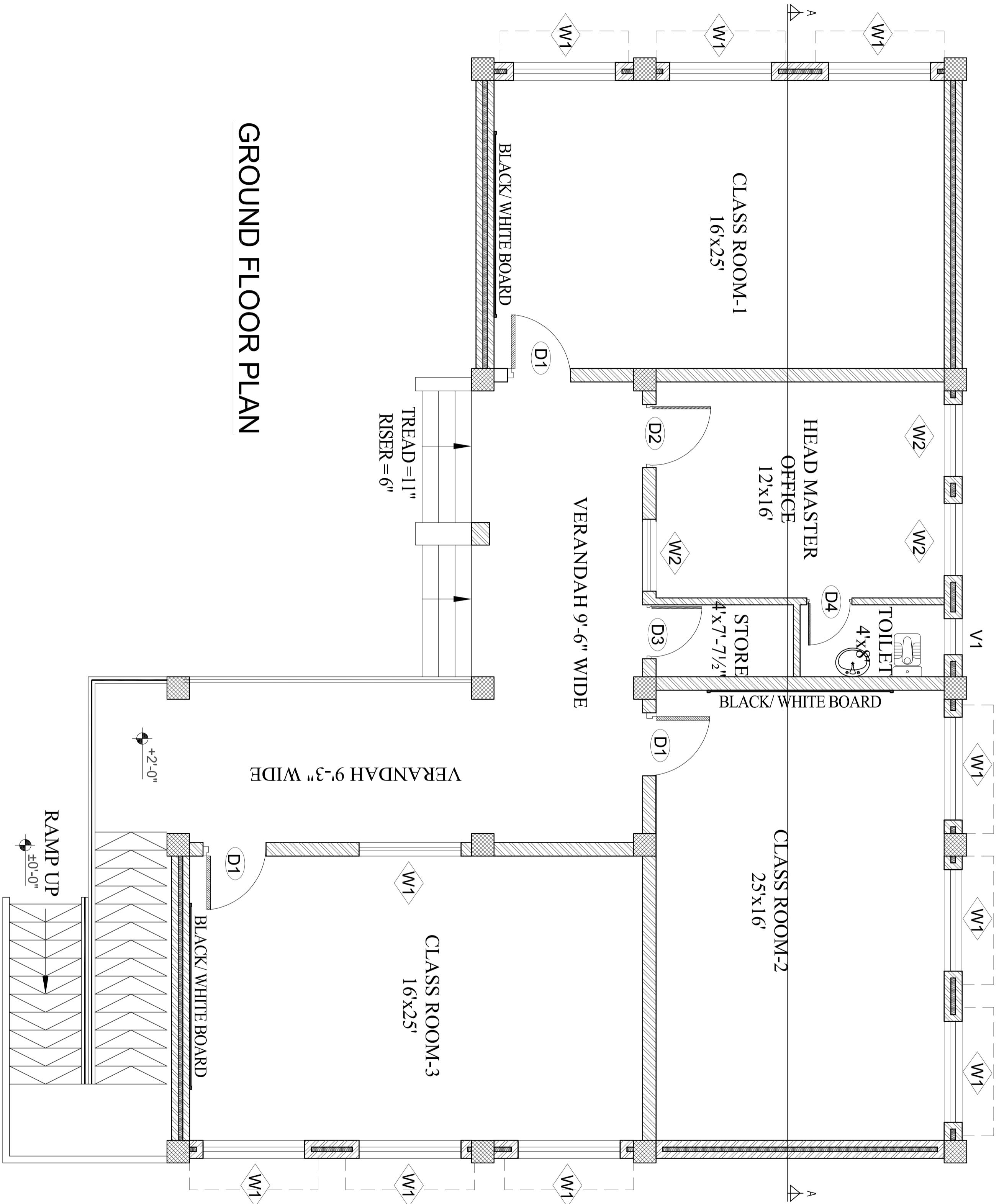
APPROVED BY  
Jae Ho Lee

KPHPIP Representative:  
Engr.

DRAWING NO.  
P166309-TYP-DR-A01

FILE NAME  
PROJECT NUMBER

SHEET NO.  
000



# GROUND FLOOR PLAN



**KPESED**  
 Kingdom Public Education Sector  
 Ministry of National Education, Youth & Sports



**KPHCIP**  
 SCHOOLS PROJECT  
 TYPICAL UP-GRADE  
 PRIMARY TO MIDDLE  
 SCHOOL

NOTE

NO.	DESCRIPTION	DATE	APPR.

REVISIONS

NEC-SUNJIN JV



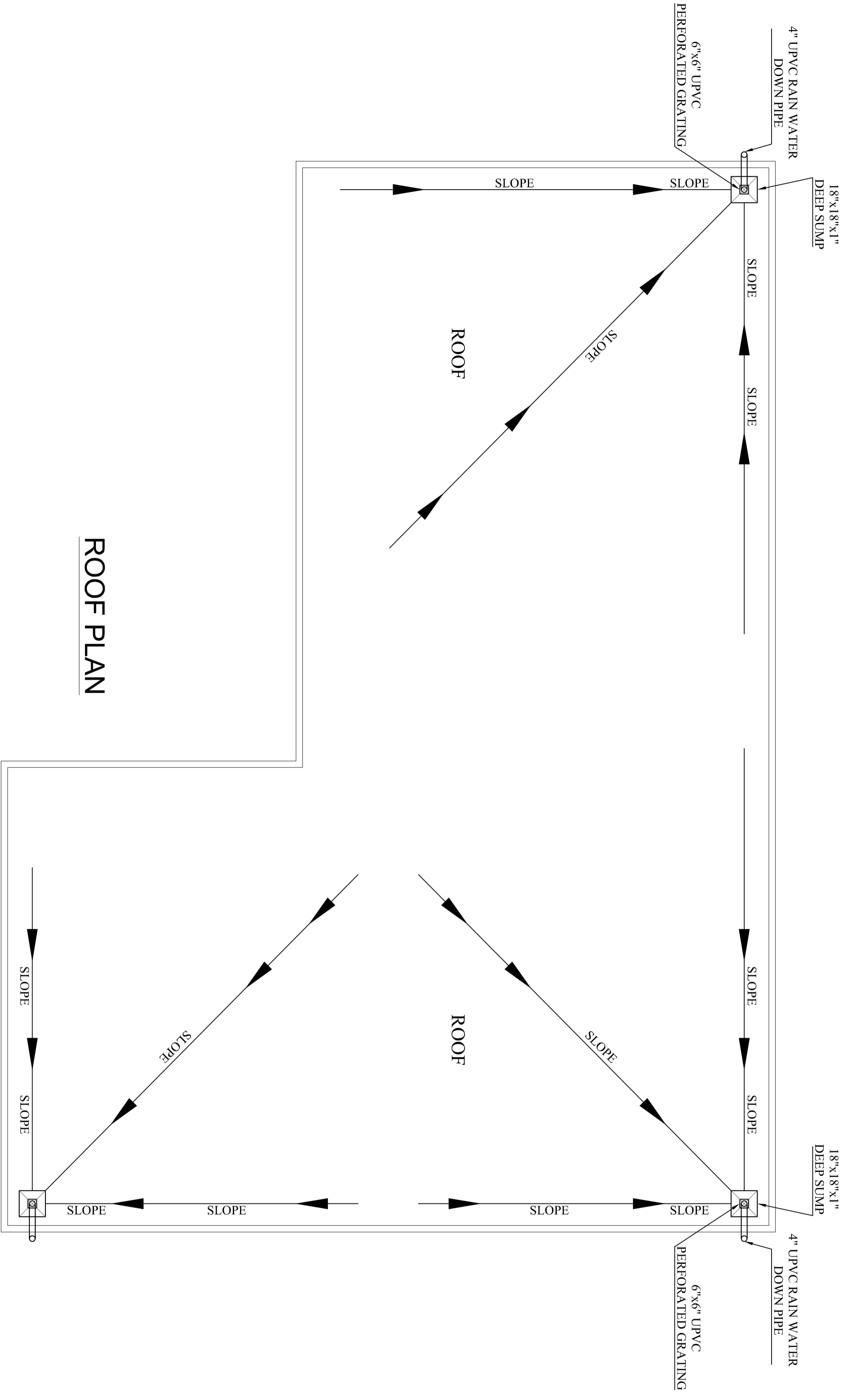
NATIONAL ENGINEERING CORPORATION



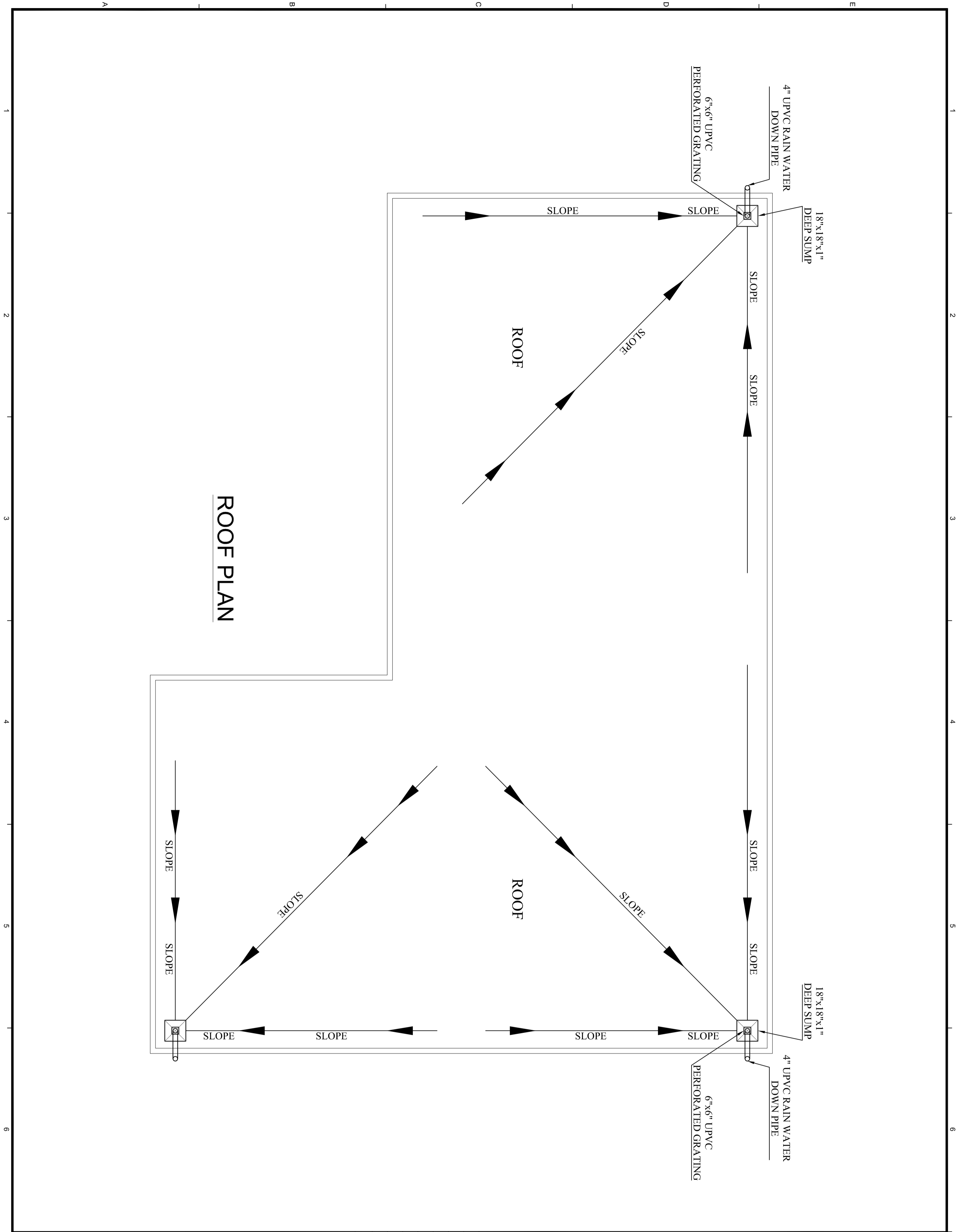
ISSUED FOR BIDDING

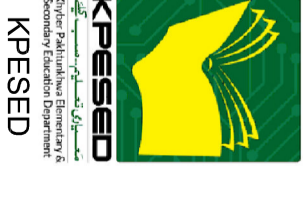
ROOF PLAN

DATE	DESIGNED BY
Aug. 2023	Imran Mahmood
SCALE	CHECKED BY
NONE	Anjum Saeed
DRAWN BY	APPROVED BY
Khalid	Jae Ho Lee
Principal Representative:	
Engr.	
DRAWING NO.	
P166309-TYP-DR-A02	
FILE NAME	SHEET NO.
PROJECT NUMBER	000



**ROOF PLAN**



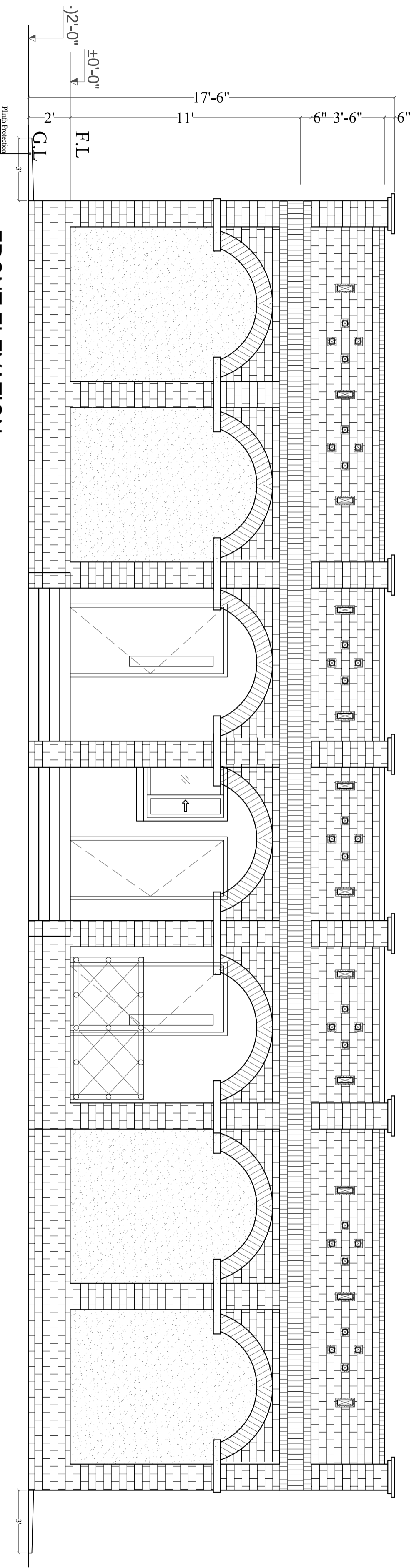


**KPESED**  
 Ministry of Education  
 Kingdom of Saudi Arabia



**KPHCIP**  
**SCHOOLS PROJECT**  
 SCHOOL NAME  
**TYPICAL UP GRADE**  
**PRIMARY TO MIDDLE**  
**SCHOOL**

NOTE



**FRONT ELEVATION**

NO.	DESCRIPTION	DATE	APPR.

REVISIONS

NEC-SUMJIN JV



NATIONAL ENGINEERING CORPORATION

**sumjin**  
**ENGINEERING & ARCHITECTURE**

DRAWING TITLE  
**ISSUED FOR BIDDING**

NAME OF DRAWING  
**SECTION AT AAA**

DATE	DESIGNED BY
Aug. 2023	Imran Mahmood
SCALE	CHECKED BY
A1 NONE	Anjum Saeed
DRAWN BY	APPROVED BY
Khalid	Jae Ho Lee
KPHCIP Representative:	
Engr.	

DRAWING NO.	FILE NAME	SHEET NO.
	P166309-TYP-DR-A03	
	PROJECT NUMBER	000



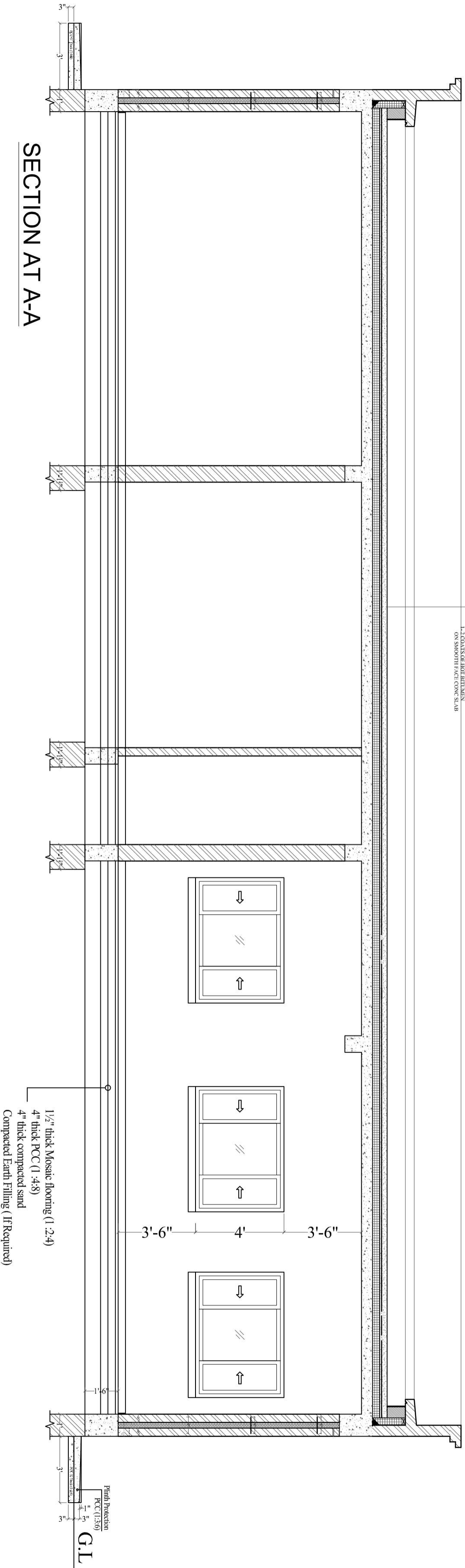
**KPESED**  
 Kingdom of Saudi Arabia  
 Ministry of Education  
 KPESED



**KHPICP**  
**SCHOOLS PROJECT**  
 SCHOOL NAME  
**TYPICAL UPGRADE**  
**PRIMARY TO MIDDLE**  
**SCHOOL**

NOTE

5. 2" BRICK LINING WITH CEMENT AND SAND BED LING
4. SAND BED LING
3. 1/2" THICK PCC (1:4:8) WITH 3mm x 3mm WIRE MESHION BY DISKWOOD
2. 0.2" MIN PER PETITELINE FILM ON SMOOTH FACED CONCRETE SLAB



**SECTION AT A-A**

1/2" thick Mosaic flooring (1:2:4)  
 4" thick compacted sand  
 Compacted Earth Filling (If Required)

Finish Protection  
 PCC (1:4:8)  
 G.L.

NO.	DESCRIPTION	DATE	APPR.

REVISIONS

NEC-SUMJIN JV



NATIONAL ENGINEERING CORPORATION

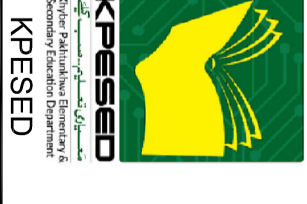


ISSUED FOR BIDDING

SECTION AT A-A

DATE	DESIGNED BY
Aug. 2023	Imran Mahmood
SCALE	CHECKED BY
NONE	Anjum Saeed
DRAWN BY	APPROVED BY
Khalid	Jae Ho Lee
KHPICP Representative:	Engr.
DRAWING NO.	
P166309-TYP-DR-A04	
FILE NAME	SHEET NO.
PROJECT NUMBER	000





**KPESED**  
 Kingdom of Saudi Arabia  
 Ministry of Education  
 KPESED



**KPHCIP**  
 SCHOOLS PROJECT

SCHOOL NAME  
**TYPICAL UPGRADE  
 PRIMARY TO MIDDLE  
 SCHOOL**

NOTE

## DOOR SCHEDULE

DOOR NO	DOOR TYPE	MATERIAL		ROUGH OPENING		DOOR DIMENSIONS			HARDWARE NO	VISION LIGHT	UNDER CUT	REMARKS
		DOOR	FRAME	WIDTH	HEIGHT	WIDTH	HEIGHT	THICK				
D01	A	METAL	METAL	3'-6"	7'-6"	3'-2"	7'-4"	1 3/4"	1	1) 6" x 4'-0"	-	1) INSULATED GLASS
D02	A	METAL	METAL	3'-6"	7'-6"	3'-2"	7'-4"	1 3/4"	2	1) 6" x 2'-0"	-	1) INSULATED GLASS
D03	A	METAL	METAL	3'-6"	7'-6"	3'-2"	7'-4"	1 3/4"	4	1) 6" x 2'-0"	-	1) INSULATED GLASS
D04	B	WOOD	METAL	2'-8"	7'-6"	2'-4"	7'-4"	1 3/4"	3	-	-	-
D05	A	METAL	METAL	3'-6"	7'-6"	3'-2"	7'-4"	1 3/4"	5	1) 6" x 2'-0"	-	1) INSULATED GLASS
D06	B	WOOD	METAL	2'-8"	7'-6"	2'-4"	7'-4"	1 3/4"	6	-	1"	-
RD01	A	METAL	METAL	3'-6"	7'-6"	3'-2"	7'-0"	1 3/4"	7	-	-	-



NATIONAL ENGINEERING CORPORATION

**SUNJIN**  
 ENGINEERING & ARCHITECTURE

ISSUED FOR BIDDING

DOOR SCHEDULE

NAME OF DRAWING	DESIGNED BY
DATE	Imran Mahmood
Aug. 2023	CHECKED BY
SCALE	Anjum Saeed
A1 NONE	DRAWN BY
A3 NONE	APPROVED BY
Khaleid	Jae Ho Lee
KPHCIP Representative:	
Engr:	

DRAWING NO.

P166309-TYP-DR-A05

FILE NAME

SHEET NO.

PROJECT NUMBER

000

# HARDWARE SCHEDULE

## HDW-1 (FOR CLASS ROOMS)

- 1½PR HINGES 4"x5" (STAINLESS / NRP / GRADE-1)
- 1 LOCKSET (MORTISE TYPE / LEVER TYPE HANDLE)
- 1 DOOR CLOSER  
(HEAVY DUTY / INSIDE CLASS ROOM / 90° HOLD)
- 1 DOOR STOP  
(FLOOR MOUNT / INSIDE CLASS ROOM)
- 1 WEATHER STRIP  
(HEAD, JAMB & SILL)

## HDW-2 (FOR HEAD MASTER & STAFF ROOM)

- 1½PR HINGES 4"x5" (STAINLESS / NRP / GRADE-2)
- 1 LOCKSET (MORTISE TYPE / LEVER TYPE HANDLE)
- 1 DOOR CLOSER  
(HEAVY DUTY / INSIDE ROOM)
- 1 DOOR STOP  
(FLOOR MOUNT / INSIDE ROOM)
- 1 WEATHER STRIP  
(HEAD, JAMB & SILL)
- 1 THRESHOLD  
(LESS THEN ½" HEIGHT)

## HDW-3 (FOR HEAD MASTER & STAFF ROOM)

- 1½PR HINGES 4"x4" (STAINLESS / GRADE-3)
- 1 LOCKSET (BOARD TYPE / LEVER TYPE HANDLE)
- 1 DOOR STOP  
(WALL MOUNT / INSIDE ROOM)
- 1 THRESHOLD

## HDW-4 (FOR KITCHEN & FIRST FLOOR TOILET)

- 1½PR HINGES 4"x5" (STAINLESS / GRADE-1)
- 1 DOOR CLOSER  
(HEAVY DUTY / INSIDE ROOM)
- 1 DOOR STOP  
(WALL MOUNT / OUTSIDE ROOM)
- 1 PUSH PLATE (STAINLESS)
- 1 PULL PLATE (STAINLESS)
- 1 WEATHER STRIP  
(HEAD, JAMB & SILL)
- 1 THRESHOLD  
(STAINLESS / LESS THEN ½" HEIGHT)

## HDW-5 (FOR TOILET AT GROUND FLOOR)

- 1½PR HINGES 4"x5" (STAINLESS / GRADE-1)
- 1 DOOR CLOSER  
(HEAVY DUTY / INSIDE ROOM)
- 1 DOOR STOP  
(FLOOR MOUNT / INSIDE ROOM)
- 1 PUSH PLATE (STAINLESS)
- 1 PULL PLATE (STAINLESS)
- 1 WEATHER STRIP  
(HEAD, JAMB & SILL)
- 1 THRESHOLD  
(STAINLESS / LESS THEN ½" HEIGHT)

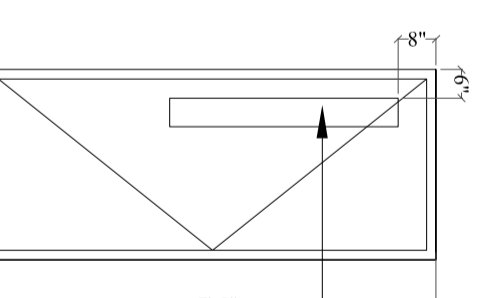
## HDW-6 (FOR TOILET WATER CLOSET DOOR)

- 1½PR HINGES 3½"x3½" (STAINLESS / GRADE-1)
- 1 PUSH PLATE (STAINLESS)
- 1 PULL PLATE (STAINLESS)
- 1 BOLT LATCH  
(STAINLESS / INSIDE)

## HDW-7 (FOR ROOF STAIR)

- 1½PR HINGES 4"x5" (STAINLESS / GRADE-3)
- 1 LOCKSET (BOARD TYPE )
- 1 DOOR CLOSER  
(HEAVY DUTY / INSIDE ROOM)
- 1 DOOR STOP  
(FLOOR MOUNT / OUTSIDE ROOM)
- 1 WEATHER STRIP  
(HEAD, JAMB & SILL)
- 1 THRESHOLD (STAINLESS)

### DOOR TYPE



- (A) THERMAL INSULATED METAL DOOR / METAL FRAME
- (B) HOLLOW WOOD CORE DOOR W/ METAL FRAME

### NOTE:-

- 1 INSULATED GLASS  
¼" THICK CLEAR LAMINATED GLASS  
¼" THICK AIR SPACE  
¼" THICK CLEAR GLASS
- 2 ALL HARDWARE ITEMS SHALL BE INSTALLED WITH PRODUCTS OF EQUAL OR APPROVED EQUAL



PROJECT TITLE  
SCHOOLS PROJECT

SCHOOL NAME  
TYPICAL UP-GRADE PRIMARY TO MIDDLE SCHOOL

### NOTE

NO.	DESCRIPTION	DATE	APPR.

REVISIONS

NEC-SUNJIN JV  
NATIONAL ENGINEERING CORPORATION  
**sunjin**  
ENGINEERING & ARCHITECTURE

DRAWING TITLE  
ISSUED FOR BIDDING

NAME OF DRAWING  
HARDWARE SCHEDULE FOR DOORS

DATE  
Aug. 2023

DESIGNED BY  
Imran Mahmood

SCALE  
A1 NONE A2 NONE

CHECKED BY  
Anjum Saeed

DRAWN BY  
Khalid

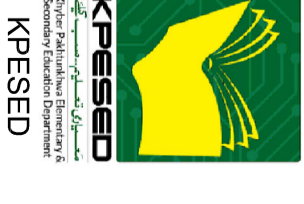
APPROVED BY  
Jae Ho Lee

KPHCIP Representative:  
Engr. Engir

DRAWING NO.  
P166309-TYP-DR-A06

FILE NAME  
PROJECT NUMBER

SHEET NO.  
000



KPESED  
Khalifa Primary Education Sector  
Department of Planning, Development & Construction



KPHCIP  
SCHOOLS PROJECT

SCHOOL NAME  
TYPICAL UPGRADE  
PRIMARY TO MIDDLE  
SCHOOL

NOTE

NO.	DESCRIPTION	DATE	APPR.

REVISIONS

NEC-SUNJIN JV



NATIONAL ENGINEERING CORPORATION

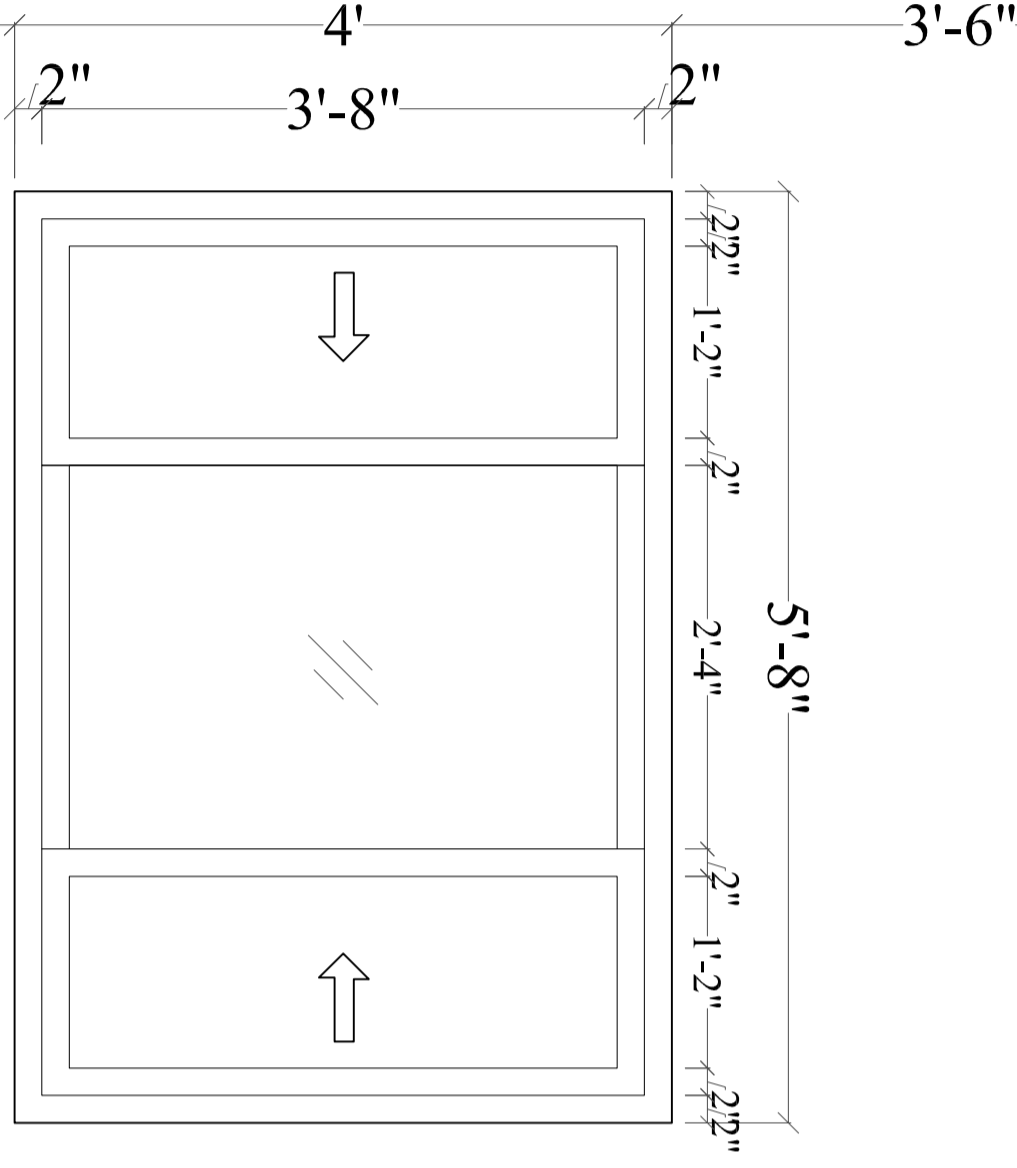
**SUNJIN**  
ENGINEERING & ARCHITECTURE

DRAWING TITLE  
ISSUED FOR BIDDING

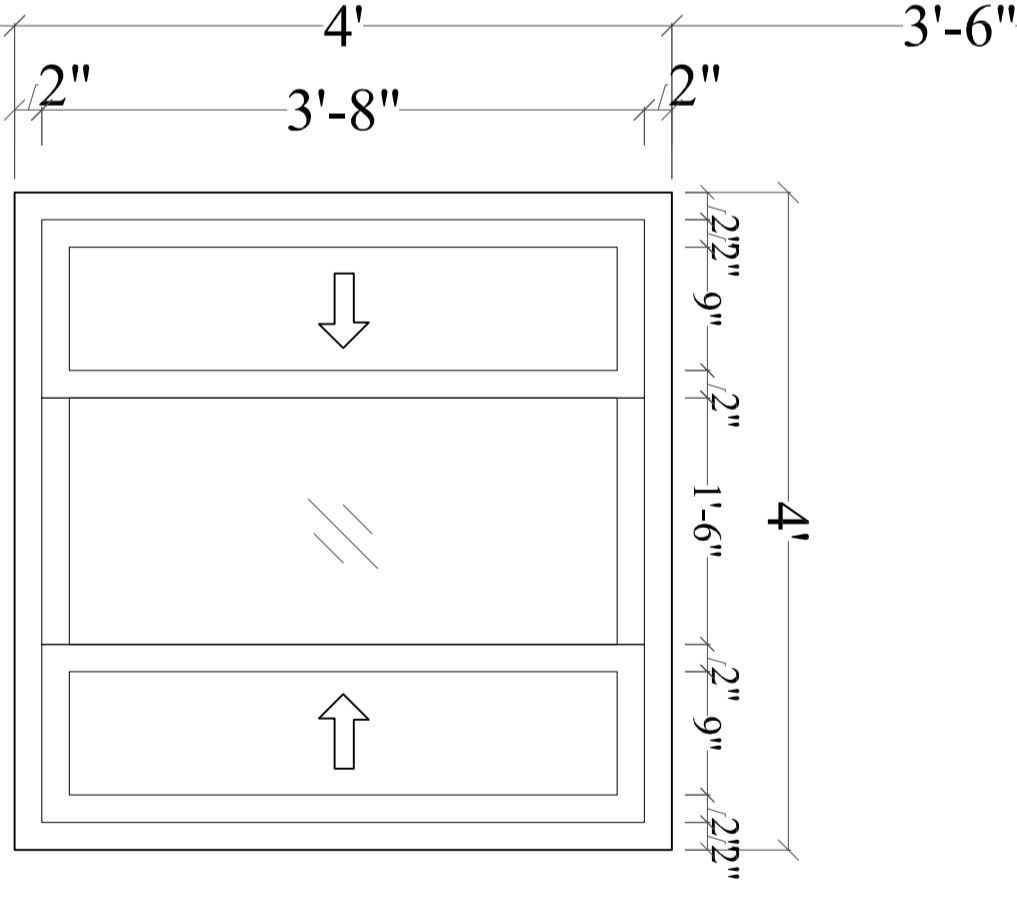
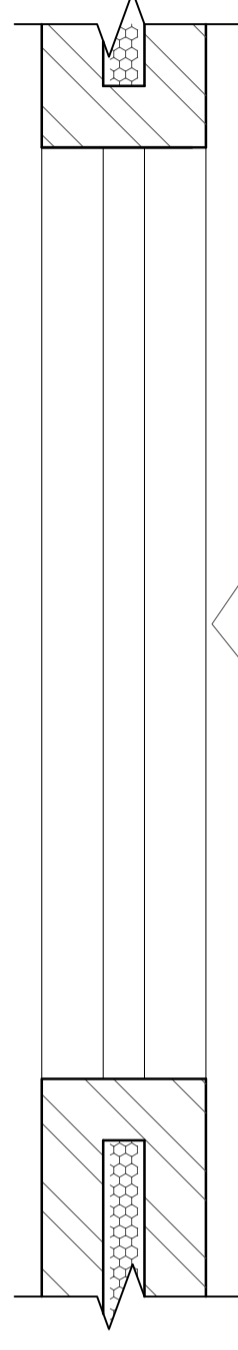
NAME OF DRAWING  
WINDOW'S DETAIL

DATE	DESIGNED BY
Aug. 2023	Imran Mahmood
SCALE	CHECKED BY
A1 NONE	A3 Ajlum Saeed
DRAWN BY	APPROVED BY
Khalid	Jae Ho Lee
KPHCIP Representative:	
Engr:	
DRAWING NO.	
P166309-TYP-DR-A07	
FILE NAME	SHEET NO.
P166309-TYP-DR-A07	000
PROJECT NUMBER	
000	

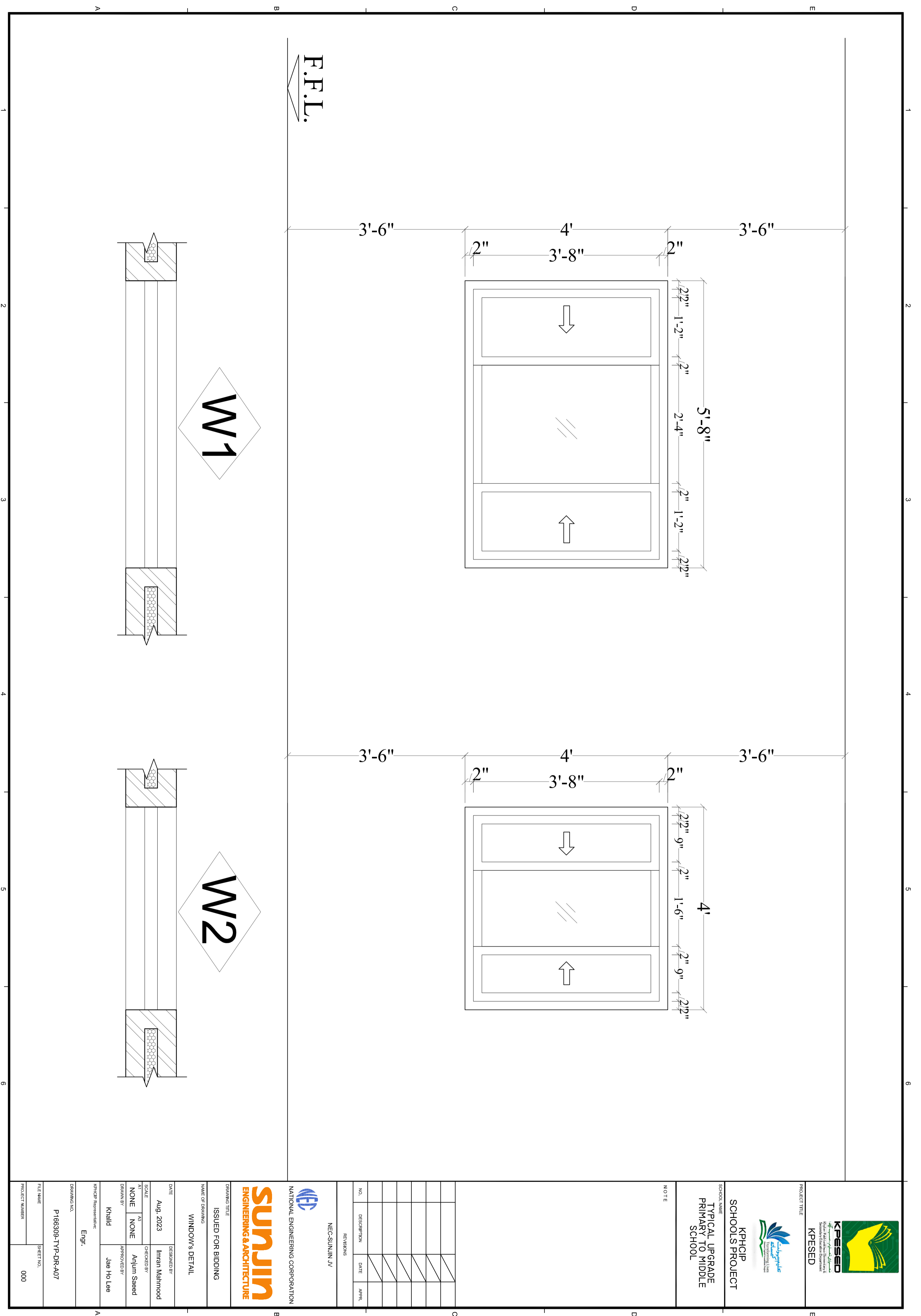
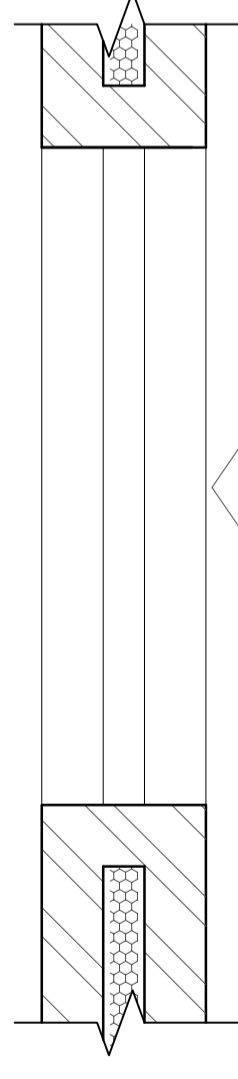
F.F.L.



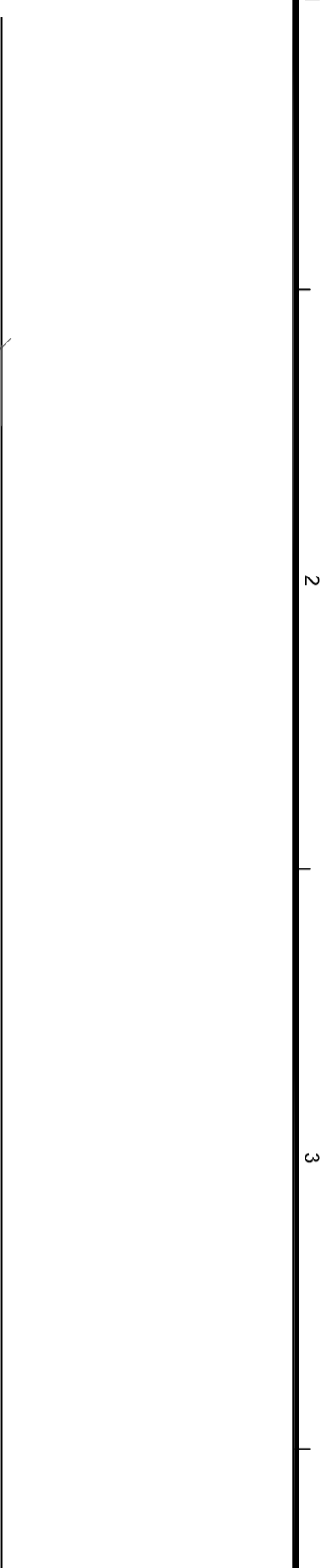
W1



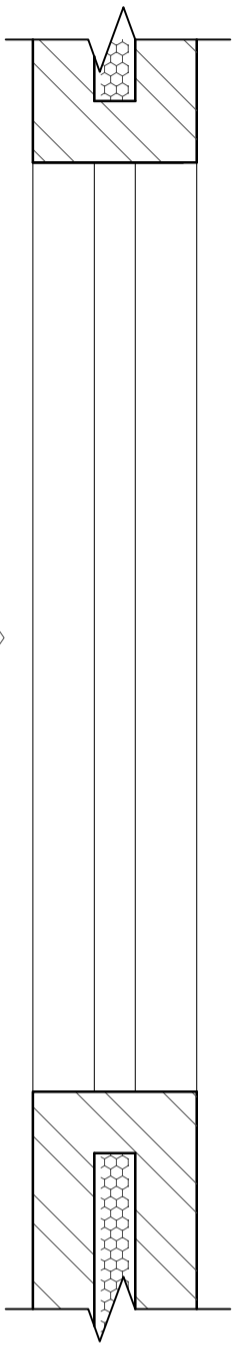
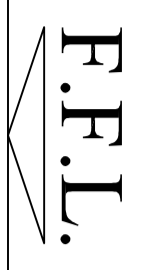
W2



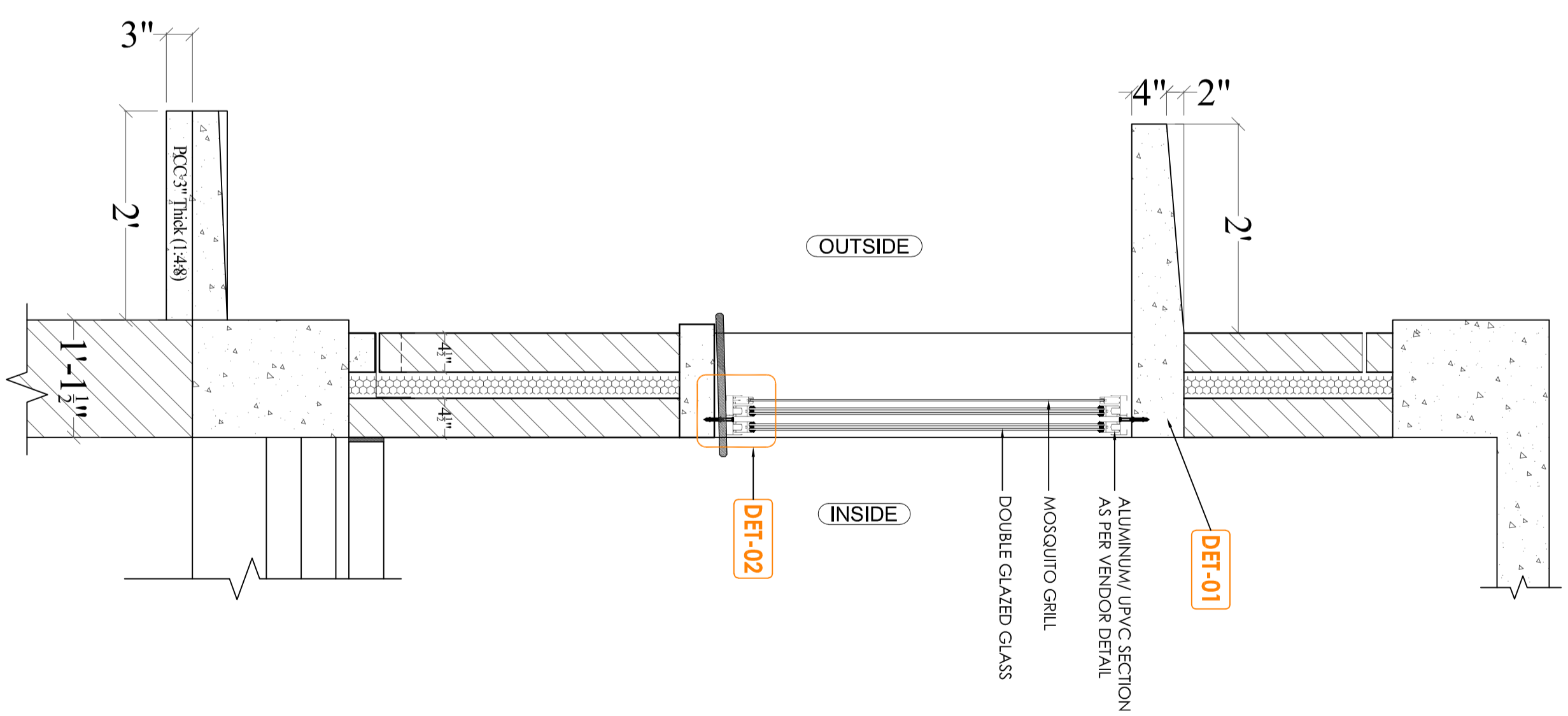
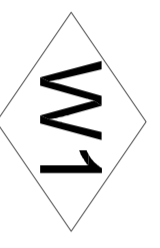




# SLIDING WINDOW ELEVATION



# WINDOW PLAN



**KPESBD**  
 Kermanshah Provincial Education & Scientific Research Organization  
**KPESBD**

**KPHCIP**  
 SCHOOLS PROJECT  
 TYPICAL UPGRADE  
 PRIMARY TO MIDDLE  
 SCHOOL

NOTE

NO.	DESCRIPTION	DATE	APPR.

**sumjin**  
 ENGINEERING & ARCHITECTURE

NATIONAL ENGINEERING CORPORATION

NEC-SUMJIN JV

DRAWING TITLE		ISSUED FOR BIDDING	
NAME OF DRAWING			
WINDOW'S ELEVATION & SECTION			
DATE	DESIGNED BY		
Aug. 2023	Imran Mahmood		
SCALE	CHECKED BY		
A1 NONE	Anjum Saeed		
A3 NONE	APPROVED BY		
	Khalid		
KPHCIP Representative:			
Engr. Engir			
DRAWING NO.			
P166309-TYP-DR-A08			
FILE NAME	SHEET NO.		
PROJECT NUMBER	000		

E



KPESED  
Kilimo Production, Extension & Dissemination  
Kilimo Production, Extension & Dissemination

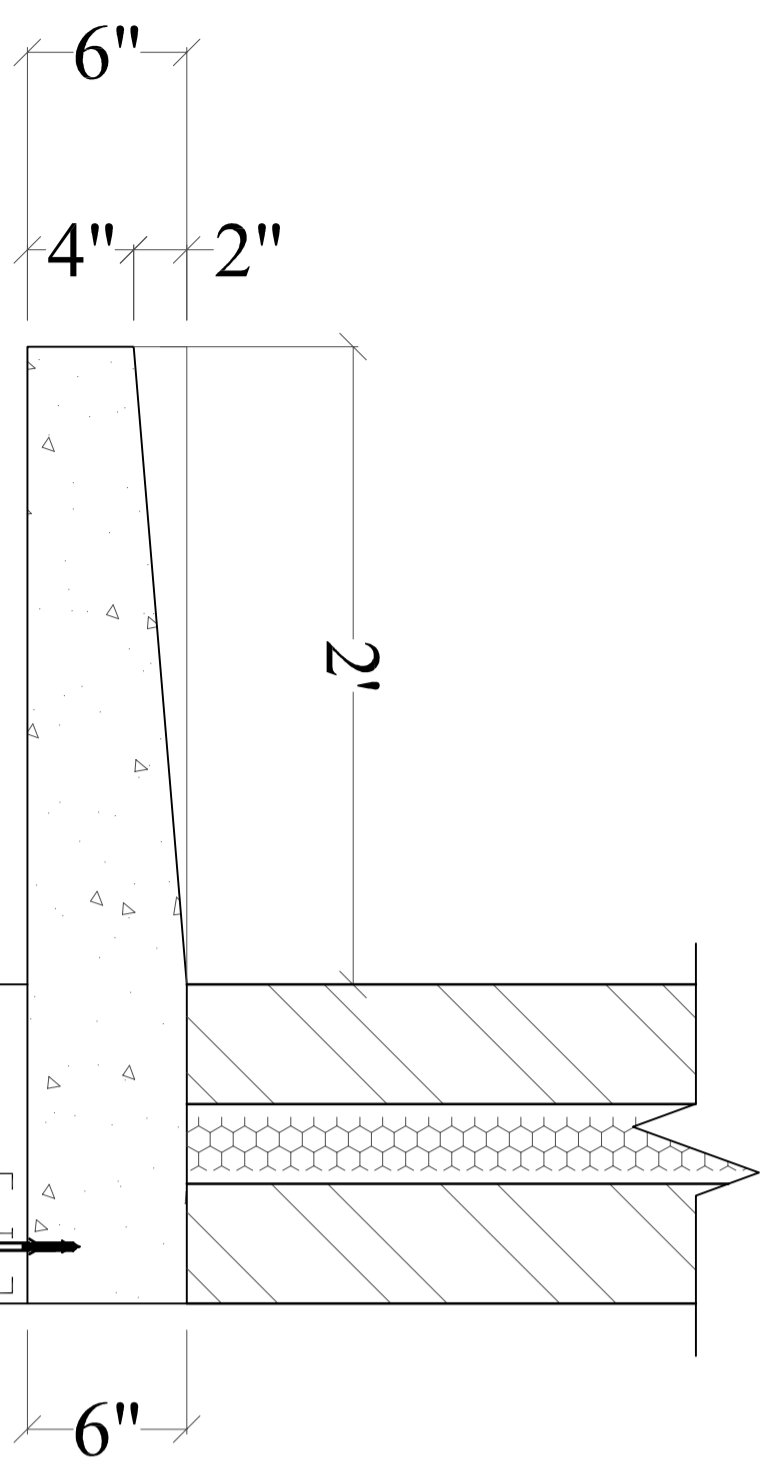


**KPHCIP**  
**SCHOOLS PROJECT**  
SCHOOL NAME  
**TYPICAL UPGRADE  
PRIMARY TO MIDDLE  
SCHOOL**

NOTE

D

NOTE



OUTSIDE

INSIDE

ALUMINUM / UPVC SECTION  
AS PER VENDOR DETAIL

MOSQUITO GRILL

DOUBLE GLAZED GLASS

**DOUBLE GLAZED WINDOW DETAIL AT - 01**

2

3

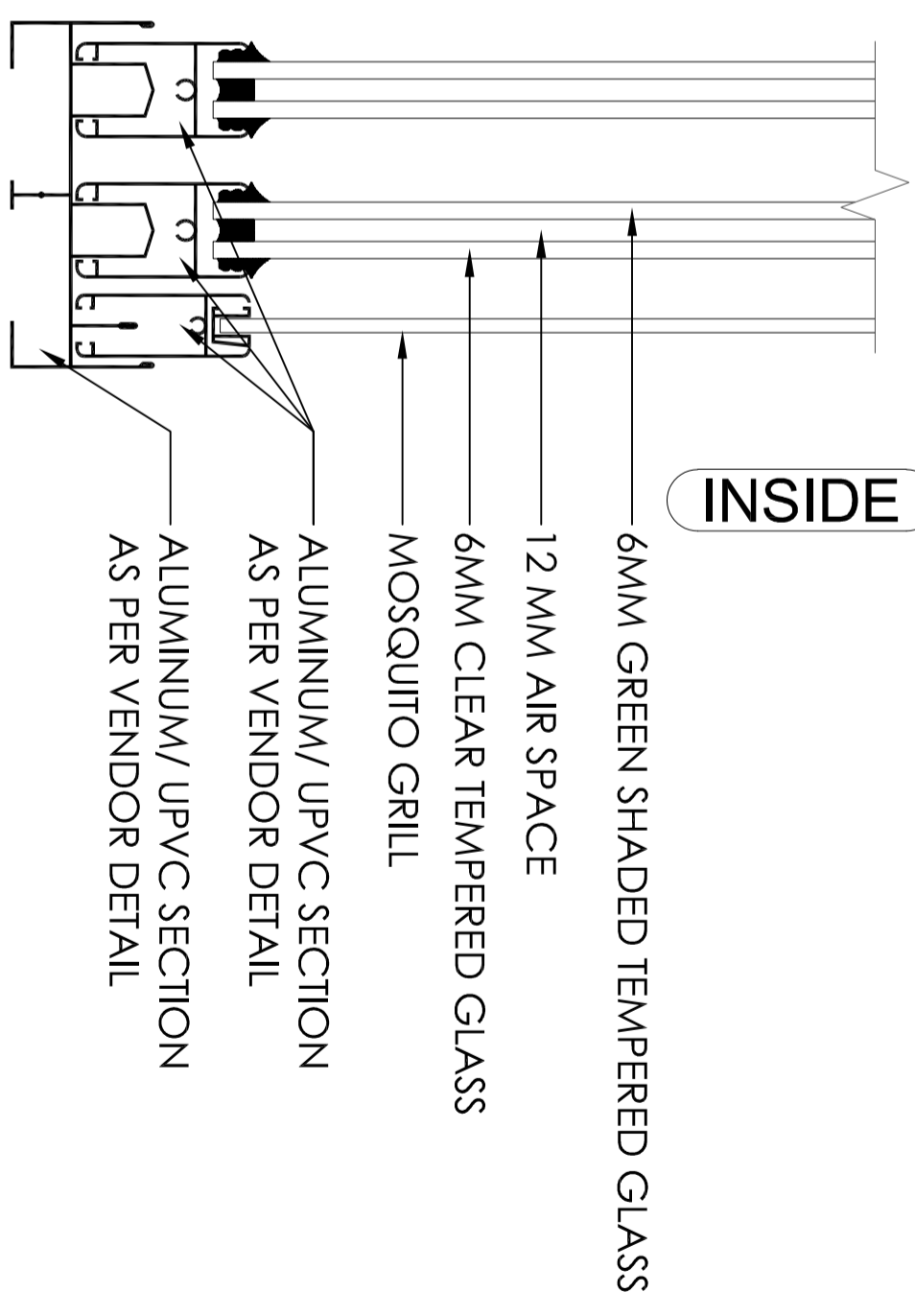
4

5

6

OUTSIDE

INSIDE



6MM GREEN SHADED TEMPERED GLASS

12 MM AIR SPACE

6MM CLEAR TEMPERED GLASS

MOSQUITO GRILL

ALUMINUM / UPVC SECTION  
AS PER VENDOR DETAIL

ALUMINUM / UPVC SECTION  
AS PER VENDOR DETAIL

**DOUBLE GLAZED WINDOW DETAIL AT - 02**

NOTE:-

- 1. ALUMINUM FRAME THICKNESS 1.6 MM
- 2. UPVC FRAME THICKNESS 2.2 MM

B

**sumjin**  
ENGINEERING & ARCHITECTURE

**NEC-SUMJIN JV**  
NATIONAL ENGINEERING CORPORATION

NO.	DESCRIPTION	DATE	APPR.

DRAWING TITLE ISSUED FOR BIDDING	
NAME OF DRAWING WINDOW / CROSS SECTION DETAIL	
DATE Aug. 2023	DESIGNED BY Imran Mahmood
SCALE NONE	CHECKED BY Anjum Saeed
DRAWN BY Khalid	APPROVED BY Jae Ho Lee
KPHCIP Representative: Engr.	
DRAWING NO. P166309-TYP-DR-A09	
FILE NAME PROJECT NUMBER	SHEET NO. 000

A

A

1

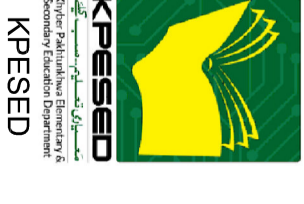
2

3

4

5

6



KPESED  
Khalifa Education  
Development Authority



KPHCIP  
SCHOOLS PROJECT  
TYPICAL UPGRADE  
PRIMARY TO MIDDLE  
SCHOOL

NOTE

NO.	DESCRIPTION	DATE	APPR.

NEC-SUNJIN JV



NATIONAL ENGINEERING CORPORATION



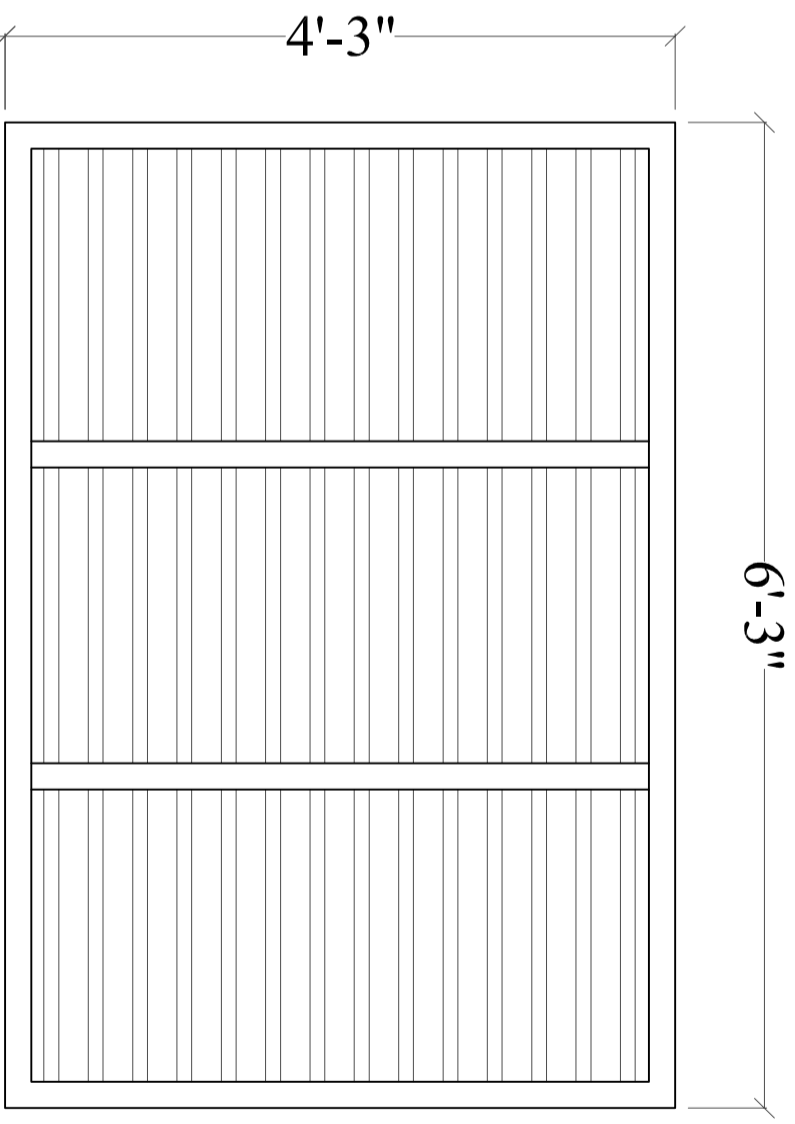
ENGINEERING & ARCHITECTURE

ISSUED FOR BIDDING

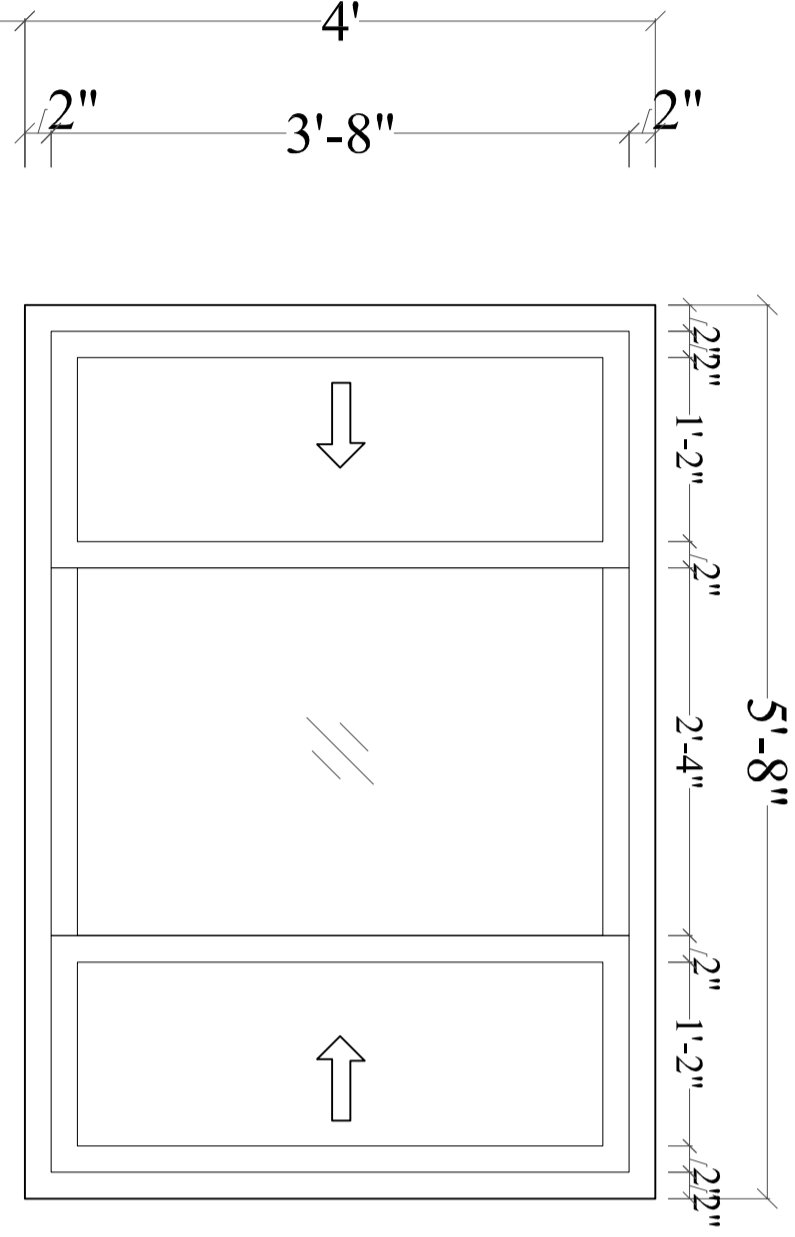
WINDOW LOUVERS & GRILL DETAIL

NAME OF DRAWING	DESIGNED BY
DATE	Imran Mahmood
Aug. 2023	
CHECKED BY	APPROVED BY
SCALE	Anjum Saeed
A1 NONE	
A3 NONE	
DRAWN BY	APPROVED BY
Khalid	Jae Ho Lee
Principal Representative:	
Engr:	

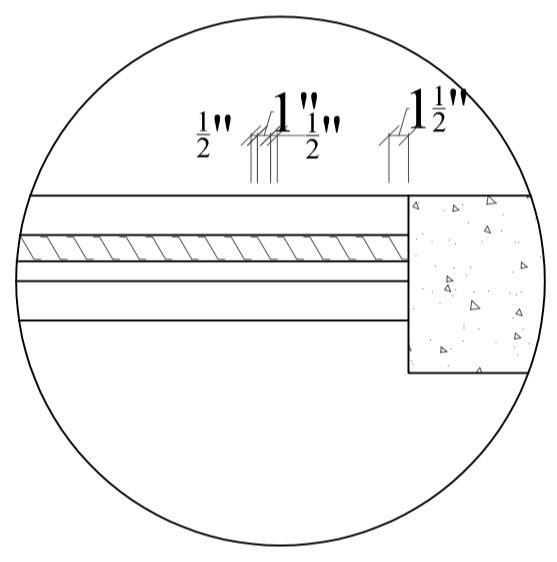
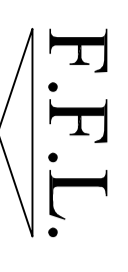
DRAWING NO.	SHEET NO.
P166309-TYP-DR-A10	000
FILE NAME	PROJECT NUMBER
	000



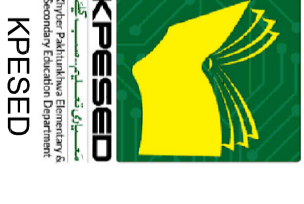
TYPICAL LOUVERS DETAIL



TYPICAL WINDOWS GRILL DETAIL



LOUVERS DETAIL



KPESED  
Khalifa Port Education Sector  
Department of Planning, Development & Administration



KPHCIP  
SCHOOLS PROJECT

SCHOOL NAME  
TYPICAL UPGRADE  
PRIMARY TO MIDDLE  
SCHOOL

**BLACK COLOR PAINT  
ON STEEL GUARDRAIL  
(TYP)**

NOTE

NO.	DESCRIPTION	DATE	APPR.

REVISIONS

NEC-SUNJIN JV



NATIONAL ENGINEERING CORPORATION

**SUNJIN**  
ENGINEERING & ARCHITECTURE

DRAWING TITLE  
ISSUED FOR BIDDING

NAME OF DRAWING

DATE  
AR-18 (INTERNAL STAIR  
Aug-2024) (CASE DESIGN) Mainmood

DESIGNED BY

SCALE

CHECKED BY

DRAWN BY

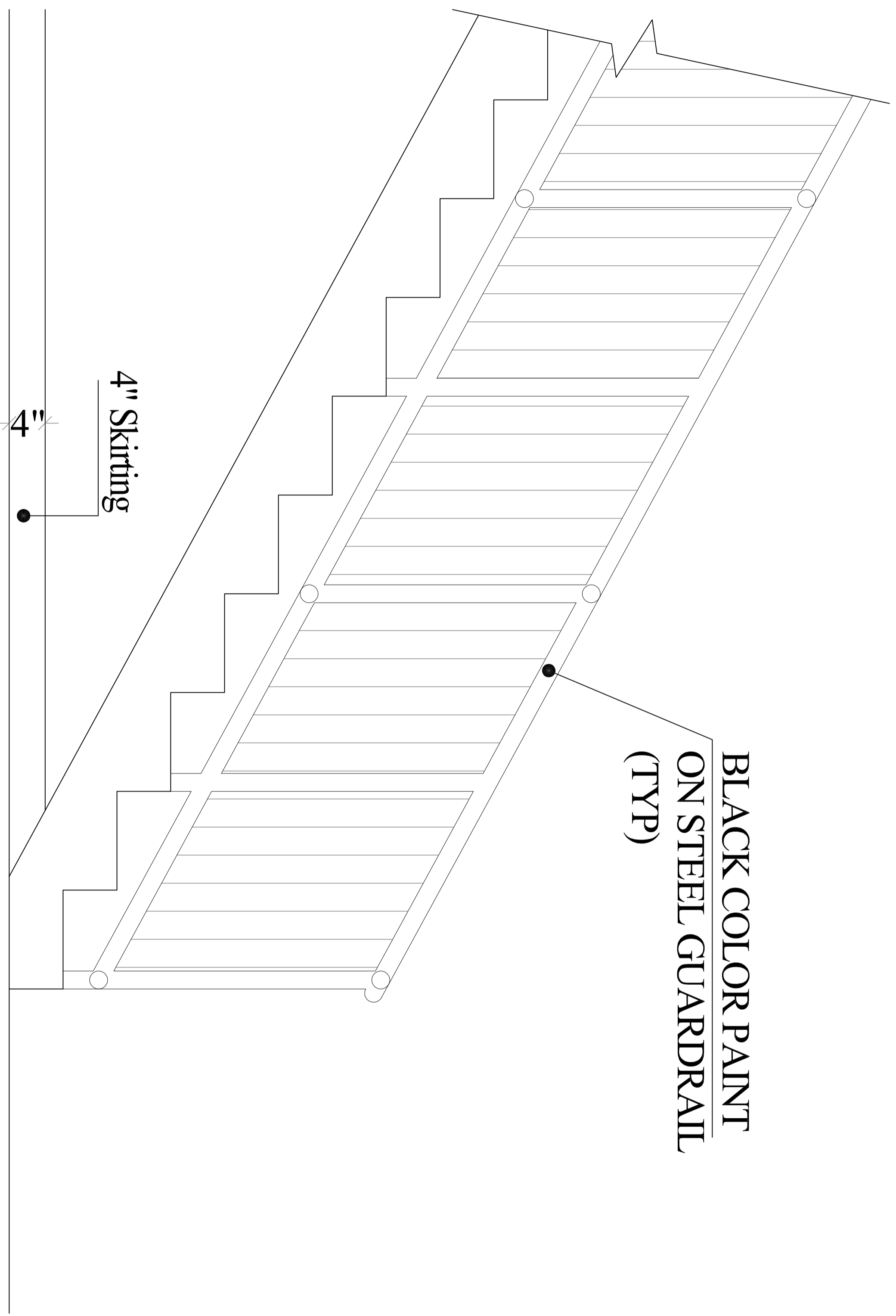
APPROVED BY

KPHCIP Representative:

Engr. Engir

DRAWING NO.  
P166309-TYP-DR-A11

FILE NAME  
PROJECT NUMBER  
SHEET NO.  
000



**(INTERNAL STAIR CASE DETAIL)**



PROJECT TITLE

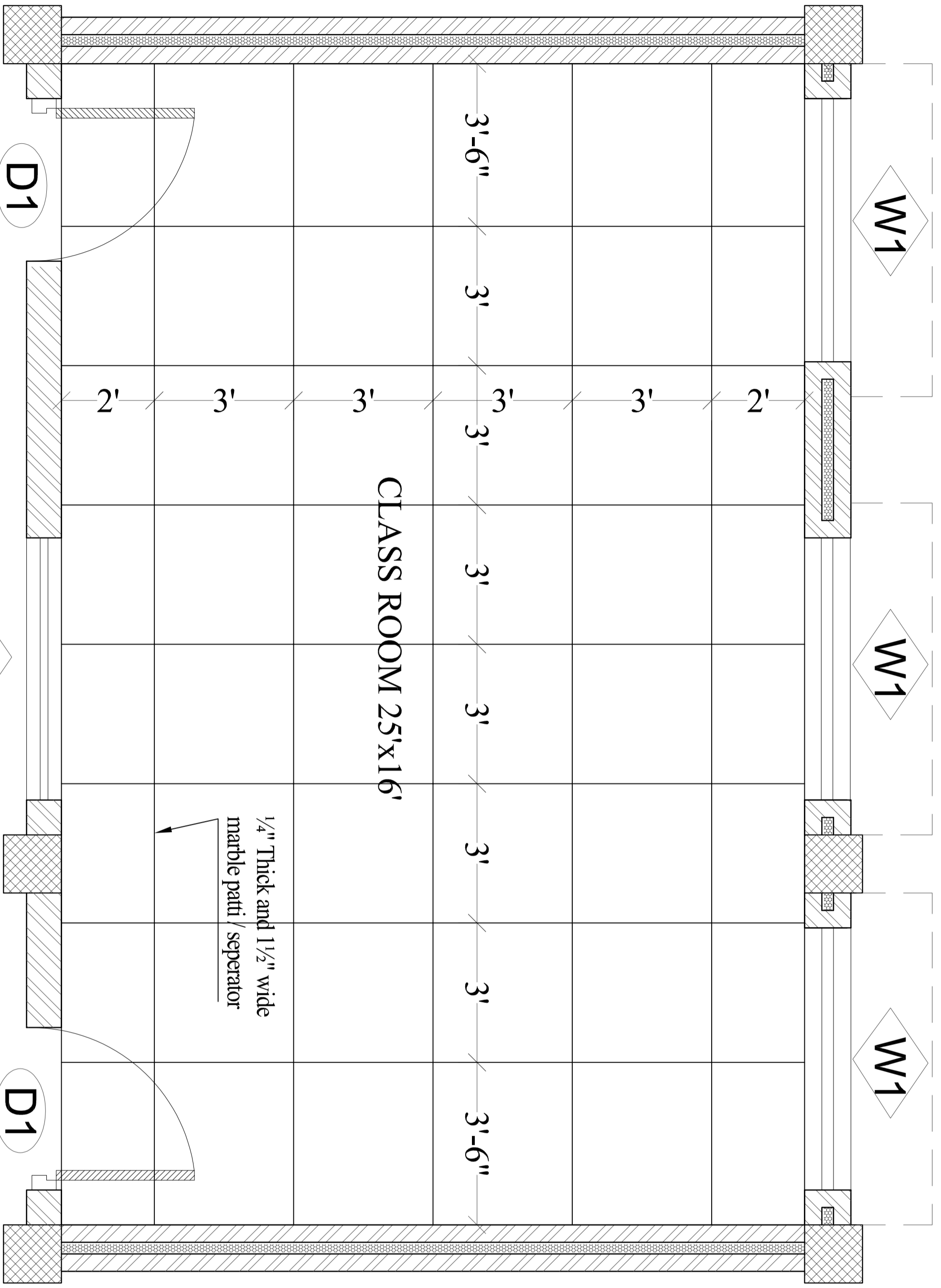


SCHOOL NAME  
KPHCIP  
SCHOOLS PROJECT

TYPICAL UPGRADE  
PRIMARY TO MIDDLE  
SCHOOL

NOTE

1 1/2" thick Mosaic flooring (1:2:4)  
4" thick PCC (1:4:8)  
4" thick compacted sand  
Compacted Earth Filling (If Required)



TYPICAL FLOOR DETAIL

DRAWING TITLE		ISSUED FOR BIDDING	
NAME OF DRAWING			
TYPICAL FLOOR PLAN DETAIL			
DATE	DESIGNED BY	DRAWN BY	
Aug. 2023	Imran Mahmood	Anjum Saeed	
SCALE	CHECKED BY	APPROVED BY	
AS NOTED	None	Khalid	
DRAWN BY		APPROVED BY	
None		Jae Ho Lee	
KPHCIP Representative			
Engr.			
DRAWING NO.			
P1668309-TYP-DR-A12			
FILE NAME	SHEET NO.	PROJECT NUMBER	
	000	000	

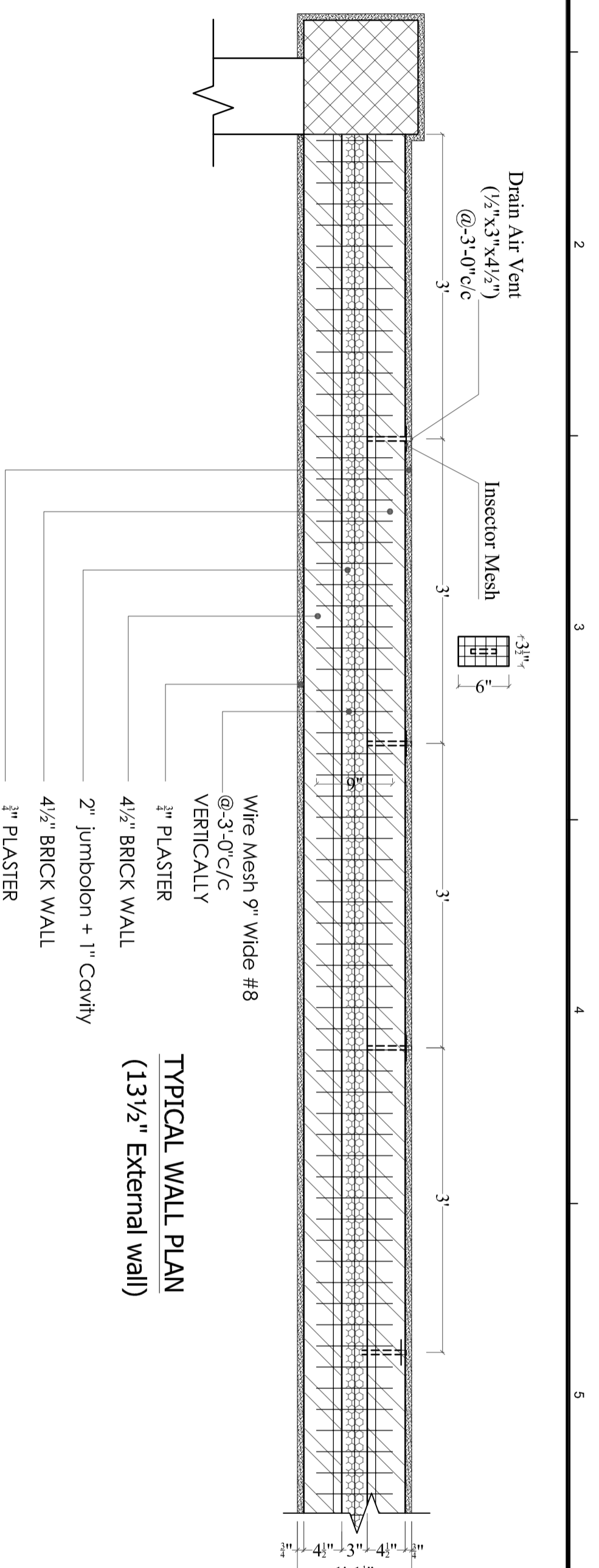
**sumjin**  
ENGINEERING & ARCHITECTURE

NATIONAL ENGINEERING CORPORATION

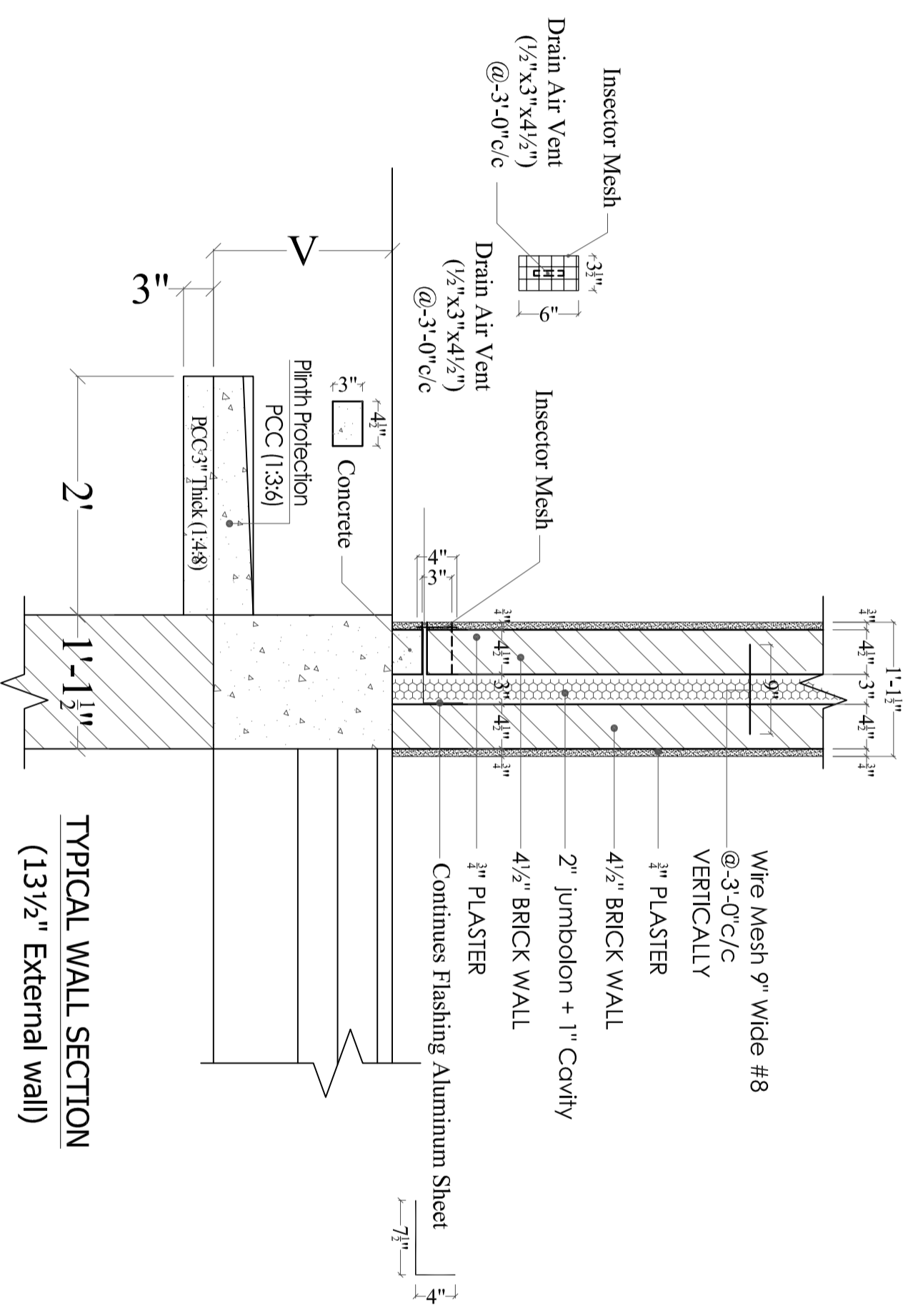
NEC-SUNJIN JV

NO.	DESCRIPTION	DATE	APPR.





**TYPICAL WALL PLAN**  
(13 1/2" External wall)



**TYPICAL WALL SECTION**  
(13 1/2" External wall)

**(Typical cross section of)**  
**13 1/2" Exterior wall section)**



**SCHOOL NAME**  
KPHCIP  
SCHOOLS PROJECT  
**TYPICAL UPGRADE**  
**PRIMARY TO MIDDLE**  
**SCHOOL**

**NOTE**

NO.	DESCRIPTION	DATE	APPR.

REVISIONS

NEC-SUNJIN JV  
NATIONAL ENGINEERING CORPORATION  
**SUNJIN**  
ENGINEERING & ARCHITECTURE

**DRAWING TITLE**  
ISSUED FOR BIDDING

**NAME OF DRAWING**  
Typical cross section

<b>DATE</b>	Aug. 2023	<b>DESIGNED BY</b>	Imran Mahmood
<b>SCALE</b>	NONE	<b>CHECKED BY</b>	Anjum Saeed
<b>DRAWN BY</b>	Khalid	<b>APPROVED BY</b>	Jae Ho Lee
<b>KPHCIP Representative:</b>	Engr.		
<b>DRAWING NO.</b>	P166309-TYP-DR-A13		
<b>FILE NAME</b>		<b>SHEET NO.</b>	000
<b>PROJECT NUMBER</b>			



KPESED  
 Kingdom Public Education  
 Sector



KPHCIP  
 SCHOOLS PROJECT  
 KPHCIP  
 TYPICAL UP GRADE  
 PRIMARY TO MIDDLE  
 SCHOOL

NOTE

NO.	DESCRIPTION	DATE	APPR.

REVISIONS			

NEC-SUJAIN JV  
 NATIONAL ENGINEERING CORPORATION

**sumjin**  
 ENGINEERING & ARCHITECTURE

DRAWING TITLE  
 ISSUED FOR BIDDING

NAME OF DRAWING  
 Typical cross section

DATE  
 Aug. 2023

DESIGNED BY  
 Imran Mahmood

CHECKED BY  
 Anjum Saeed

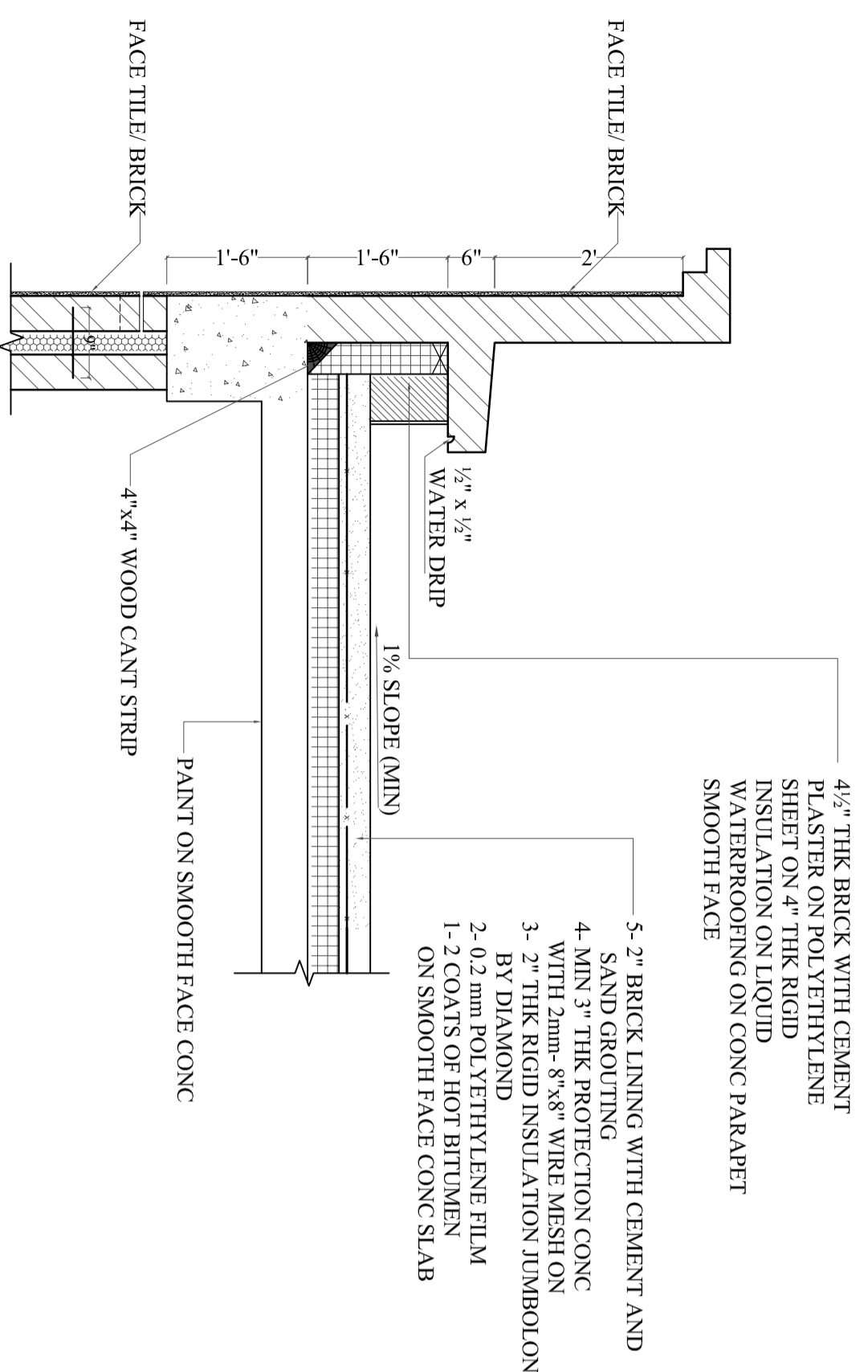
DRAWN BY  
 Khalid

APPROVED BY  
 Jae Ho Lee

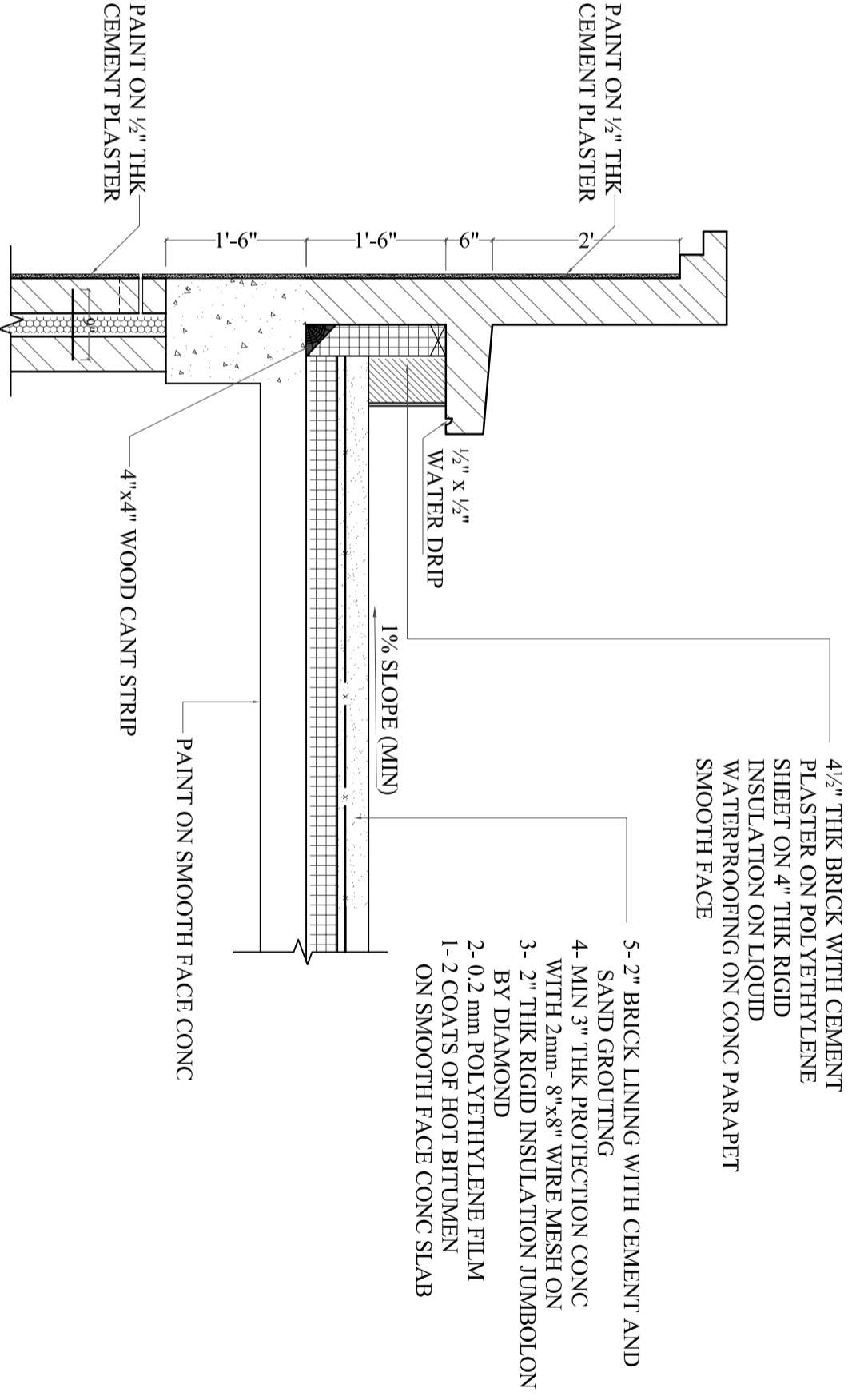
KPHCIP Representative:  
 Engr. Engir

DRAWING NO.  
 P166309-TYP-DR-A14

FILE NAME  
 SHEET NO.  
 PROJECT NUMBER  
 000



Typical roof parapet detail -1



Typical roof parapet detail -2



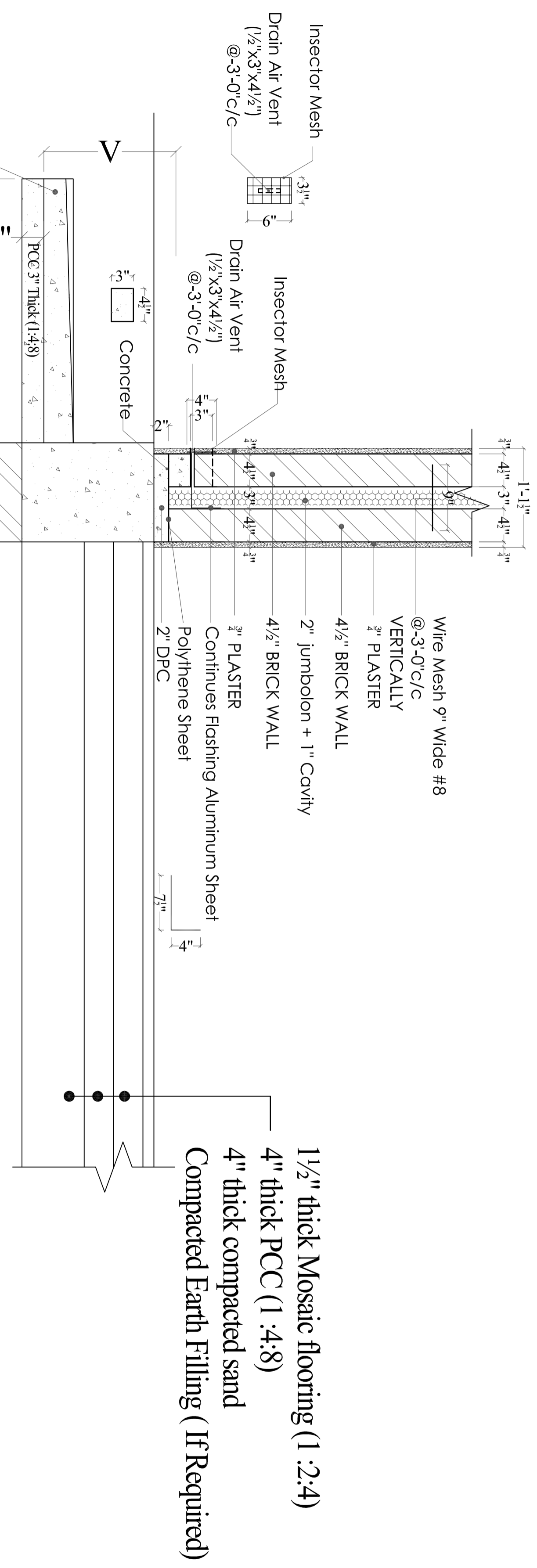
KPESED  
Khalifa Education  
Sector Development  
Authority



KPHCIP  
SCHOOLS PROJECT

SCHOOL NAME  
TYPICAL UPGRADE  
PRIMARY TO MIDDLE  
SCHOOL

NOTE



### TYPICAL PLINTH PROTECTION DETAIL "E"

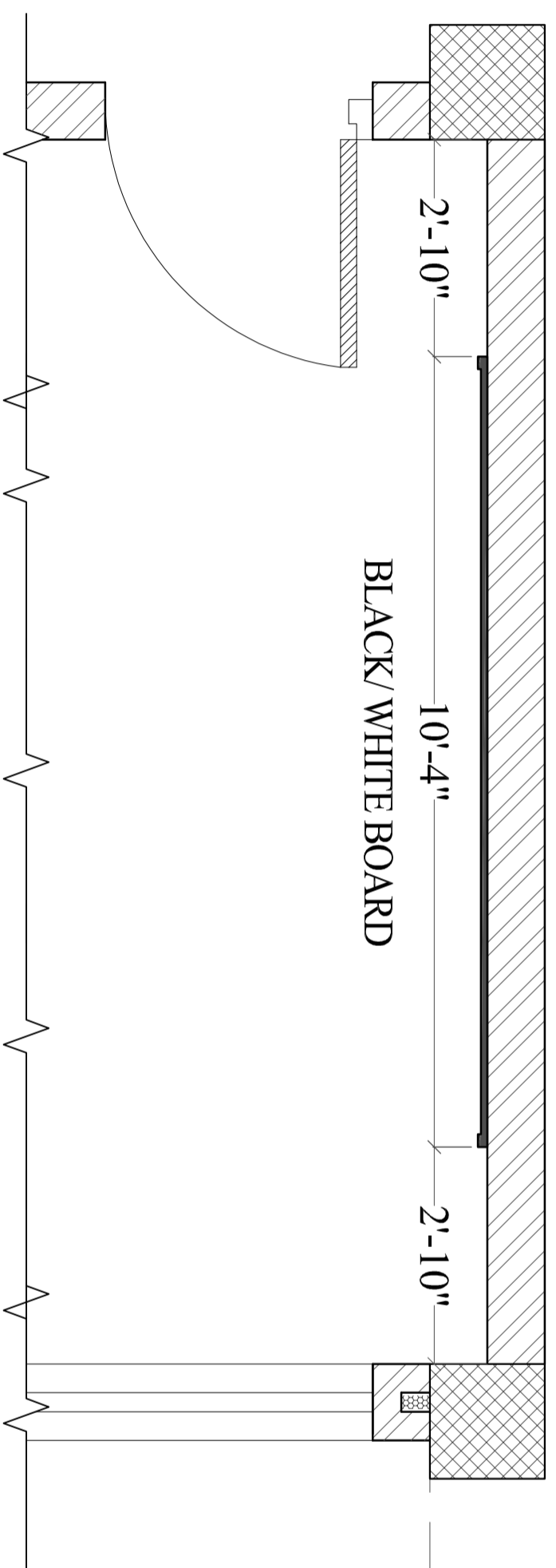
DRAWINGS TITLE		ISSUED FOR BIDDING	
NAME OF DRAWING PLINTH PROTECTION DETAIL			
DATE	DESIGNED BY		
Aug. 2023	Imran Mahmood		
SCALE	CHECKED BY		
A1 NONE	Anjum Saeed		
SCALE	APPROVED BY		
A3 NONE	Khalid		
DRAWN BY		Jae Ho Lee	
KPHCIP Representative:		Engr.	
DRAWING NO. P166309-TYP-DR-A15			
FILE NAME	SHEET NO.		
PROJECT NUMBER	000		



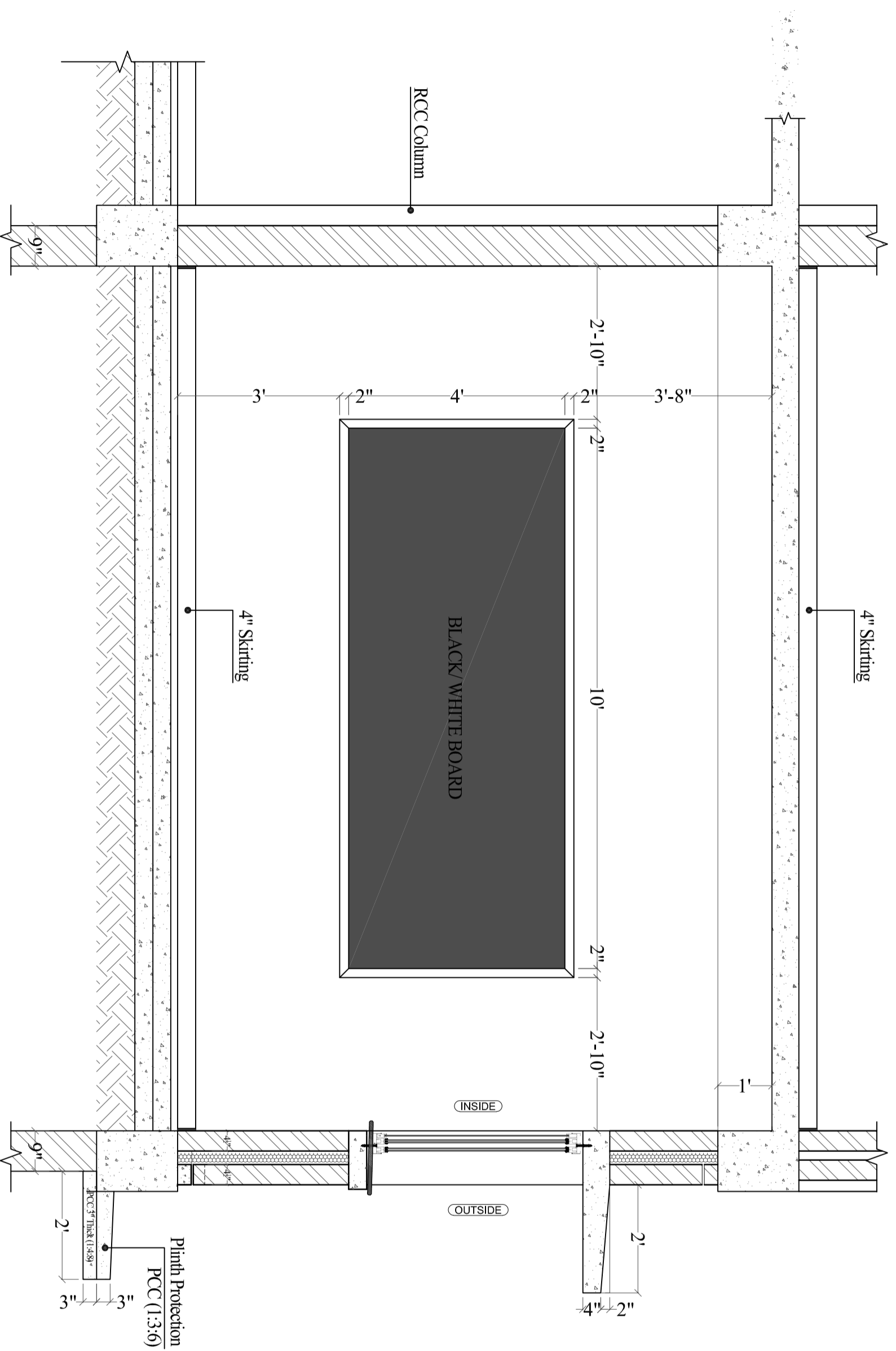
NATIONAL ENGINEERING CORPORATION  
**sumjin**  
ENGINEERING & ARCHITECTURE

NEC-SUNJIN JV

REVISIONS			
NO.	DESCRIPTION	DATE	APPR.



**PLAN**



PROJECT TITLE  
KPHCIP  
SCHOOLS PROJECT  
SCHOOL NAME  
TYPICAL UPGRADE  
PRIMARY TO MIDDLE  
SCHOOL

NOTE

NO.	DESCRIPTION	DATE	APPR.

REVISIONS  
NEC-SUJAIN JV

NATIONAL ENGINEERING CORPORATION  
**SUMJIN**  
ENGINEERING & ARCHITECTURE

DRAWING TITLE  
ISSUED FOR BIDDING  
NAME OF DRAWING  
BLACK / WHITE BOARD  
DETAIL  
DATE  
Aug. 2023  
DESIGNED BY  
Imran Mahmood  
SCALE  
A1 NONE A3 NONE  
DRAWN BY  
Khailid  
CHECKED BY  
Anjum Saeed  
APPROVED BY  
Jae Ho Lee  
KPHCIP Representative:  
Engr.

DRAWING NO.  
P166309-TYP-DR-A16  
FILE NAME  
SHEET NO.  
PROJECT NUMBER  
000



KPESED  
Kilgus Primary Education School  
Kilgus Primary Education School



KPHCIP  
SCHOOLS PROJECT  
SCHOOL NAME  
TYPICAL UPGRADE  
PRIMARY TO MIDDLE  
SCHOOL

NOTE

NO.	DESCRIPTION	DATE	APPR.

NEC-SUNJIN JV

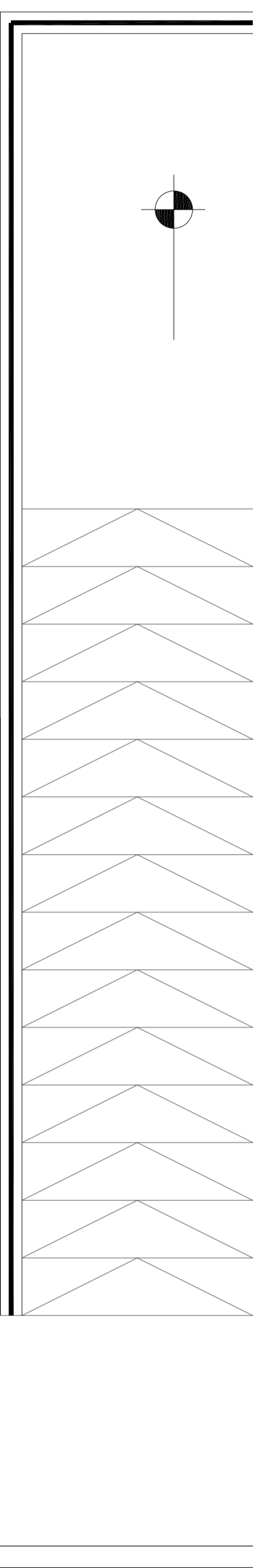


NATIONAL ENGINEERING CORPORATION  
**SUNJIN**  
ENGINEERING & ARCHITECTURE

ISSUED FOR BIDDING

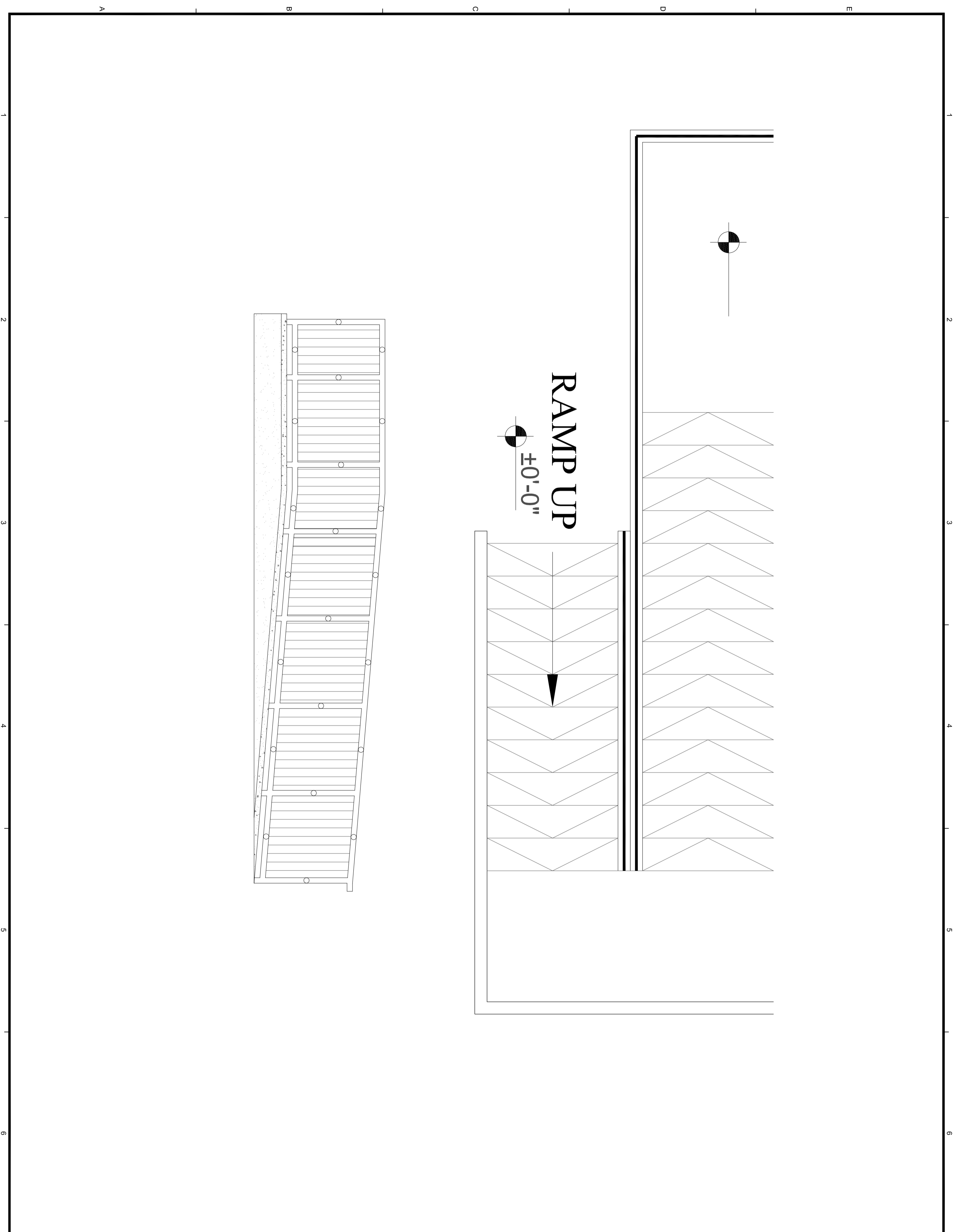
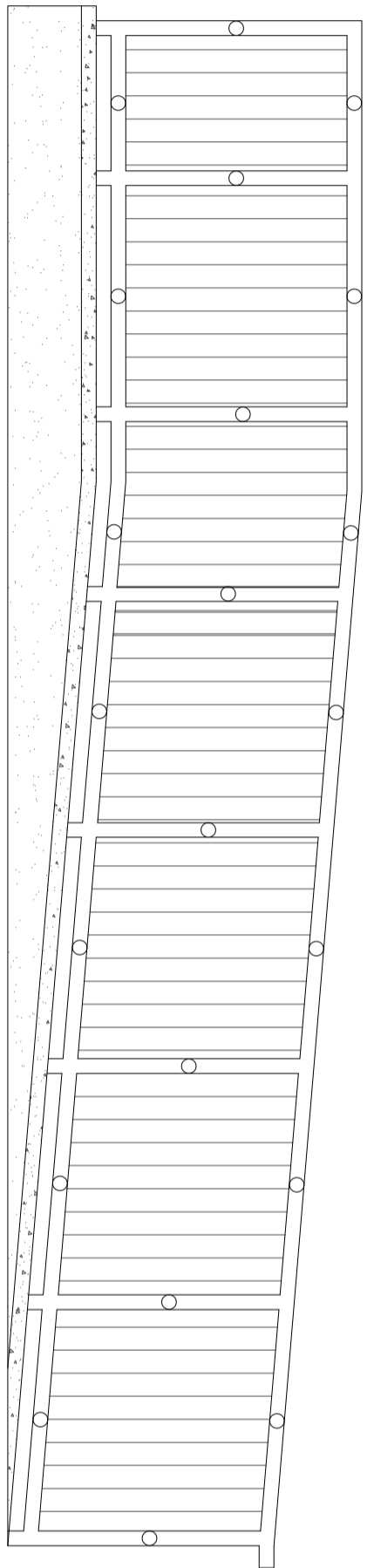
RAMP DETAIL

DATE	DESIGNED BY
Aug. 2023	Imran Mahmood
SCALE	CHECKED BY
A1 NONE	Anjum Saeed
DRAWN BY	APPROVED BY
Khalid	Jae Ho Lee
KPHCIP Representative:	
Engr.	
DRAWING NO.	
P166309-TYP-DR-A17	
FILE NAME	SHEET NO.
PROJECT NUMBER	000



RAMP UP

±0'-0"







**KPESED**  
 Ministry of Education  
 Kingdom of Saudi Arabia



**KPHCIP**  
 SCHOOLS PROJECT

SCHOOL NAME  
**TYPICAL UPGRADE  
 PRIMARY TO MIDDLE  
 SCHOOL**

NOTE

NO.	DESCRIPTION	DATE	APPR.

REVISIONS

NEC-SUNJIN JV



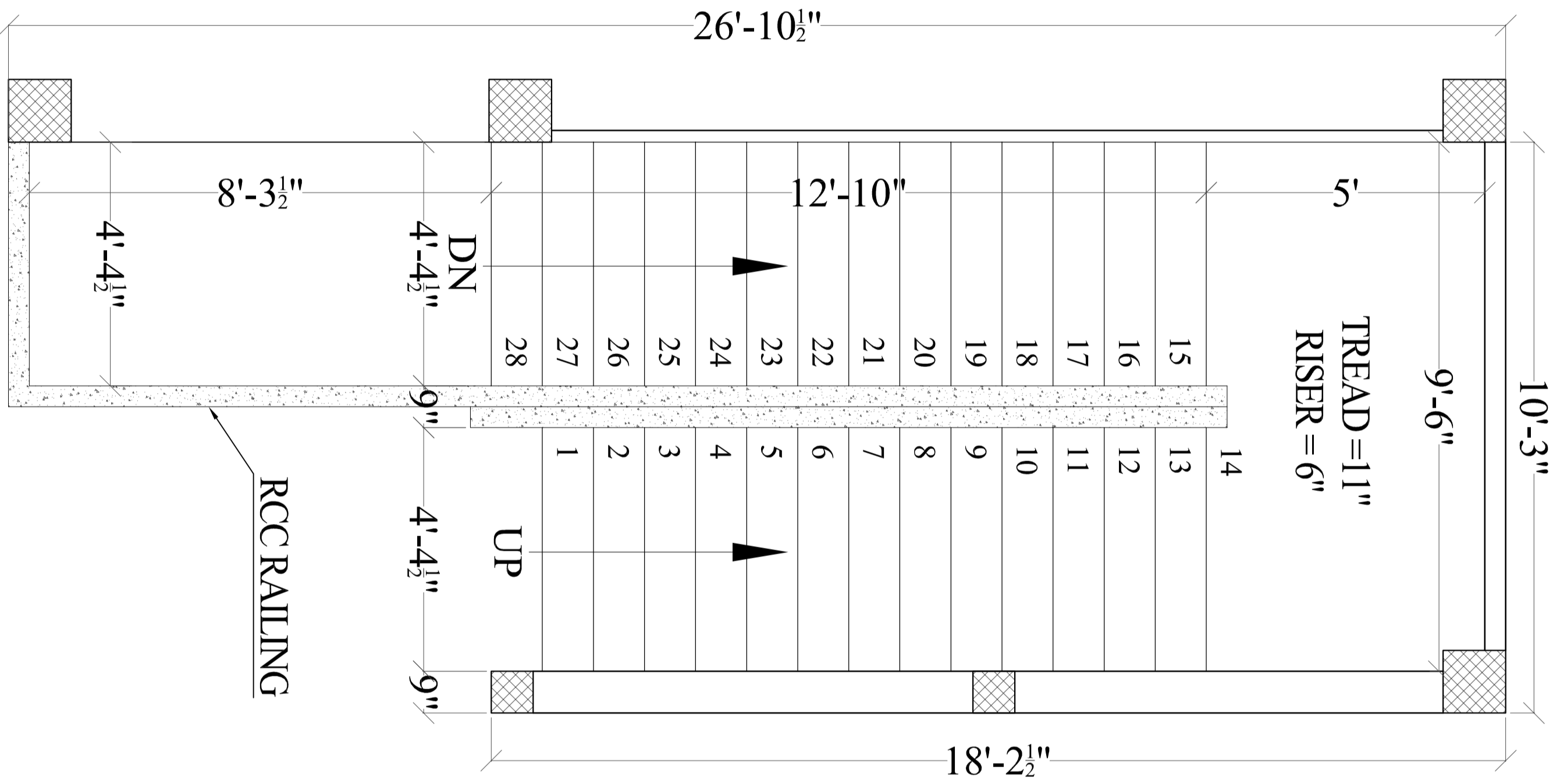
NATIONAL ENGINEERING CORPORATION

**SUNJIN**  
 ENGINEERING & ARCHITECTURE

ISSUED FOR BIDDING

EMERGENCY STAIR CASE DETAIL

DATE	DESIGNED BY
Aug. 2023	Imran Mahmood
SCALE	CHECKED BY
NONE	Anjum Saeed
DRAWN BY	APPROVED BY
Khalid	Jae Ho Lee
KPHCIP Representative:	Engr.
DRAWING NO.	
P166309-TYP-DR-A18	
FILE NAME	SHEET NO.
PROJECT NUMBER	000



**EMERGENCY STAIR**

RCC RAILING

DN  
 4'-4 1/2"  
 UP  
 4'-4 1/2"

TREAD = 11"  
 RISER = 6"

26'-10 1/2"

10'-3"

9'-6"

12'-10"

8'-3 1/2"

4'-4 1/2"

18'-2 1/2"

9"

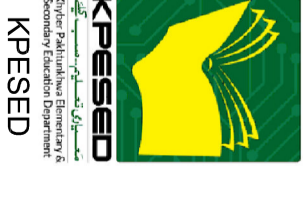
9"

4'-4 1/2"

4'-4 1/2"

9"

9"

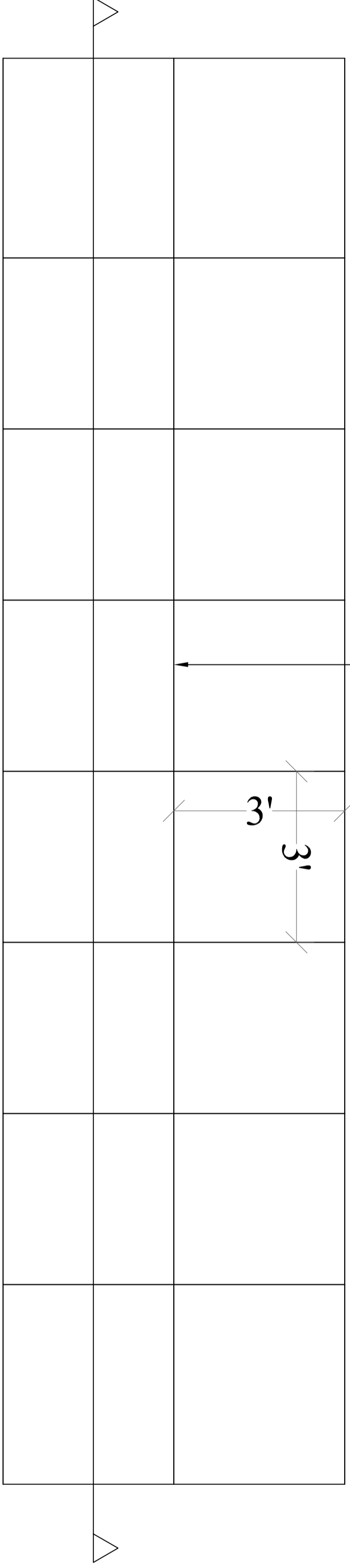


**KPESED**  
 Ministry of Education  
 Kingdom of Saudi Arabia

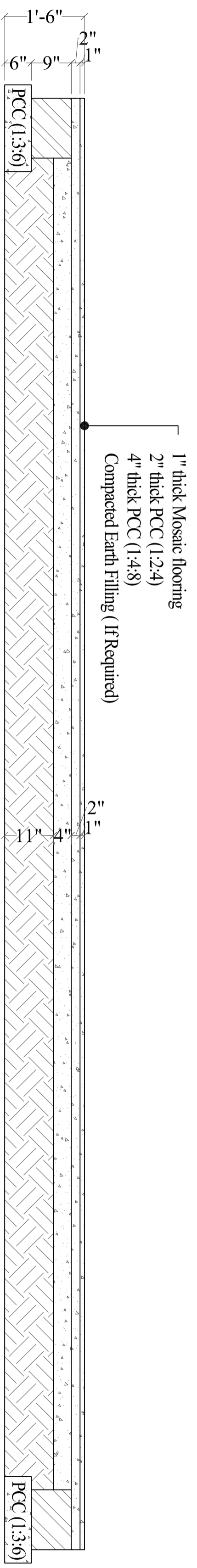


**KPHCIP**  
**SCHOOLS PROJECT**  
 SCHOOL NAME  
**TYPICAL UPGRADE**  
**PRIMARY TO MIDDLE**  
**SCHOOL**

NOTE



**Typical pavement part plan**



**Typical pavement Detail**

NO.	DESCRIPTION	DATE	APPR.
REVISIONS			

NEC-SUNJIN JV



NATIONAL ENGINEERING CORPORATION



DRAWING TITLE  
**ISSUED FOR BIDDING**

NAME OF DRAWING  
**TYPICAL PAVEMENT DETAIL**

DATE	DESIGNED BY
Aug. 2023	Imran Mahmood
SCALE	CHECKED BY
A1 NONE	Anjum Saeed
A3 NONE	APPROVED BY
DRAWN BY Khalid	Jae Ho Lee
KPHCIP Representative:	
Engr.	

DRAWING NO.	P166309-TYP-DR-A19
FILE NAME	SHEET NO.
PROJECT NUMBER	000